



Water Quality Monitoring Location : TKW1

Date	Start Time	Weather	Water depth (cm)	Temperature (°C)		pH		DO (mg/L)		DO (%)		Turbidity (NTU)		Suspended Solids (mg/L)	
				Value	Average	Value	Average	Value	Average	Value	Average	Value	Average	Value	Average
02 January 2025	10:00	Fine	20	20.5	20.5	7.5	7.5	8.3	8.3	92.0	92.0	5.4	5.3	3.3	3.3
				20.5		7.5		8.3		92.0		5.3		3.2	
04 January 2025	10:30	Fine	20	19.7	19.7	7.7	7.7	8.5	8.5	93.5	93.5	4.2	4.2	1.4	1.3
				19.7		7.7		8.5		93.4		4.2		1.1	
06 January 2025	10:00	Fine	20	18.6	18.6	7.5	7.5	8.1	8.1	86.6	86.7	13.0	13.0	3.8	3.6
				18.6		7.5		8.1		86.7		13.0		3.4	
08 January 2025	11:30	Fine	10	19.4	19.4	7.4	7.4	8.7	8.7	94.7	94.4	5.4	5.4	3.1	3.5
				19.4		7.4		8.7		94.1		5.4		3.8	
10 January 2025	11:13	Fine	15	17.6	17.6	7.6	7.6	7.9	7.9	82.6	82.9	11.1	11.1	2.2	1.9
				17.6		7.6		7.9		83.1		11.1		1.5	
13 January 2025	10:25	Fine	20	18.2	18.2	7.8	7.8	7.8	7.8	83.3	83.2	15.4	15.4	6.9	6.5
				18.2		7.8		7.8		83.1		15.3		6.0	
15 January 2025	10:30	Fine	20	16.3	16.3	7.5	7.5	8.9	8.8	90.5	90.3	3.9	4.0	6.7	6.9
				16.3		7.5		8.8		90.1		4.1		7.0	
17 January 2025	11:09	Fine	16	17.9	17.9	7.7	7.7	8.4	8.4	89.0	88.9	11.9	11.9	6.2	5.2
				17.9		7.7		8.4		88.7		11.9		4.1	
20 January 2025	10:56	Cloudy	18	19.0	19.0	7.5	7.5	7.6	7.6	82.3	82.0	7.5	7.6	7.0	6.1
				19.0		7.5		7.6		81.7		7.6		5.1	
22 January 2025	10:40	Cloudy	30	19.2	19.2	7.4	7.4	8.8	8.7	95.0	94.7	13.3	13.3	7.9	6.6
				19.2		7.4		8.7		94.4		13.2		5.2	
24 January 2025	10:36	Fine	30	19.8	19.8	7.4	7.4	7.3	7.3	80.4	80.3	3.1	3.0	7.9	6.6
				19.8		7.4		7.3		80.2		3.0		5.2	
27 January 2025	11:20	Cloudy	28	16.9	16.9	7.8	7.8	8.1	8.0	83.3	82.7	4.3	4.3	5.7	5.7
				16.9		7.8		7.9		82.1		4.3		5.7	

Water Quality Monitoring Location : TKW

Date	Start Time	Weather	Water depth (cm)	Temperature (°C)		pH		DO (mg/L)		DO (%)		Turbidity (NTU)		Suspended Solids (mg/L)	
				Value	Average	Value	Average	Value	Average	Value	Average	Value	Average	Value	Average
02 January 2025	10:15	Fine	13	20.5	20.5	7.6	7.6	8.3	8.3	92.1	92.1	5.8	5.8	6.6	5.2
				20.5		7.6		8.3		92.1		5.8		3.7	
04 January 2025	10:45	Fine	10	19.7	19.7	7.7	7.7	8.5	8.5	93.2	93.2	4.3	4.3	1.3	1.3
				19.7		7.7		8.5		93.2		4.3		1.2	
06 January 2025	10:15	Fine	20	18.6	18.6	7.5	7.5	8.1	8.1	86.9	86.9	13.1	13.1	2.9	3.0
				18.6		7.5		8.1		86.9		13.1		3.0	
08 January 2025	11:45	Fine	16	19.4	19.4	7.6	7.6	8.5	8.5	92.0	92.0	5.5	5.5	1.8	2.5
				19.4		7.7		8.5		91.9		5.5		3.1	
10 January 2025	11:25	Fine	20	17.6	17.6	7.6	7.6	8.1	8.1	85.4	85.5	11.1	11.1	2.4	2.0
				17.6		7.6		8.2		85.6		11.1		1.5	
13 January 2025	10:39	Fine	19	18.2	18.2	7.8	7.8	7.7	7.7	81.5	81.5	14.9	14.8	6.3	6.3
				18.2		7.8		7.7		81.4		14.7		6.2	
15 January 2025	10:45	Fine	19	16.3	16.3	7.6	7.6	9.0	8.9	91.5	91.4	3.7	3.7	6.4	6.2
				16.3		7.6		8.9		91.3		3.7		5.9	
17 January 2025	11:20	Fine	25	17.9	17.9	7.8	7.8	8.1	8.1	85.7	85.7	11.9	11.9	5.1	4.6
				17.9		7.8		8.1		85.6		11.9		4.1	
20 January 2025	11:21	Cloudy	30	19.1	19.1	7.6	7.6	7.4	7.4	79.8	79.8	6.9	6.9	6.9	6.9
				19.1		7.6		7.4		79.8		6.9		6.9	
22 January 2025	10:56	Cloudy	26	19.2	19.2	7.5	7.5	8.5	8.5	91.6	91.6	13.1	13.1	4.7	4.5
				19.2		7.5		8.5		91.5		13.1		4.2	
24 January 2025	17:11	Fine	30	19.7	19.7	7.2	7.2	7.4	7.4	80.8	80.7	0.6	0.6	4.7	4.5
				19.7		7.2		7.4		80.5		0.6		4.2	
27 January 2025	11:08	Cloudy	30	16.5	16.5	7.8	7.8	7.5	7.5	76.3	76.7	3.2	3.2	1.9	1.8
				16.5		7.8		7.5		77.0		3.2		1.7	

Water Quality Monitoring Location : U1

Date	Start Time	Weather	Water depth (cm)	Temperature (°C)		pH		DO (mg/L)		DO (%)		Turbidity (NTU)		Suspended Solids (mg/L)	
				Value	Average	Value	Average	Value	Average	Value	Average	Value	Average	Value	Average
02 January 2025	8:01	Fine	4	20.1	20.1	7.8	7.7	8.9	8.9	97.7	97.7	10.8	10.8	38.0	35.0
				20.0		7.7		8.9		97.6		10.8		32.0	
04 January 2025	9:00	Fine	4	19.3	19.3	8.0	8.0	9.3	9.3	100.5	100.5	14.5	14.4	28.0	26.5
				19.3		8.0		9.3		100.5		14.4		25.0	
06 January 2025	16:48	Fine	4	17.7	17.7	7.6	7.6	9.5	9.5	100.0	100.0	11.8	11.8	62.0	64.0
				17.7		7.6		9.5		100.0		11.8		66.0	
08 January 2025	9:30	Fine	5	20.2	20.2	7.4	7.4	8.8	8.8	97.7	97.7	26.5	26.6	63.0	62.0
				20.2		7.4		8.8		97.6		26.6		61.0	
10 January 2025	9:32	Fine	5	17.0	17.0	7.5	7.5	10.0	10.0	103.3	103.3	11.2	11.3	78.0	69.0
				17.0		7.5		10.0		103.3		11.3		60.0	
13 January 2025	9:01	Fine	3	17.6	17.6	7.7	7.7	9.5	9.5	99.0	99.0	41.5	41.5	41.0	48.5
				17.6		7.7		9.5		99.0		41.5		56.0	
15 January 2025	9:15	Fine	5	14.5	14.5	7.5	7.5	10.7	10.7	104.5	104.5	35.0	34.9	46.0	52.0
				14.5		7.5		10.7		104.5		34.9		58.0	
17 January 2025	9:30	Fine	5	17.2	17.2	7.6	7.6	9.6	9.6	99.7	99.7	18.0	18.0	61.0	67.5
				17.2		7.6		9.6		99.7		18.0		74.0	
20 January 2025	9:00	Cloudy	4	18.1	18.1	8.1	8.1	9.6	9.6	101.9	101.9	19.0	19.1	36.0	37.5
				18.0		8.1		9.6		101.9		19.1		39.0	
22 January 2025	9:04	Cloudy	4	18.9	18.9	8.1	8.1	9.8	9.8	105.3	105.3	17.9	17.9	5.6	6.9
				18.9		8.1		9.8		105.3		17.9		8.1	
24 January 2025	9:03	Fine	5	19.7	19.7	7.2	7.2	8.7	8.7	95.1	95.1	17.9	17.9	5.6	6.9
				19.7		7.2		8.7		95.1		18.0		8.1	
27 January 2025	9:12	Cloudy	7	17.6	17.6	8.2	8.2	9.4	9.4	98.1	98.1	14.2	14.2	9.9	8.7
				17.6		8.2		9.4		98.1		14.2		7.4	

Water Quality Monitoring Location : SW

Date	Start Time	Weather	Water depth (cm)	Temperature (°C)		pH		DO (mg/L)		DO (%)		Turbidity (NTU)		Suspended Solids (mg/L)	
				Value	Average	Value	Average	Value	Average	Value	Average	Value	Average	Value	Average
02 January 2025	8:00	Fine	16	20.5	20.5	7.1	7.1	8.1	8.1	90.3	90.1	4.3	4.3	1.0	1.0
				20.5		7.1		8.1		89.8		4.3		1.0	
04 January 2025	10:00	Fine	16	19.7	19.7	7.7	7.7	8.3	8.3	90.4	90.4	2.8	2.8	2.2	2.0
				19.7		7.7		8.3		90.4		2.8		1.8	
06 January 2025	9:30	Fine	15	18.2	18.2	7.4	7.4	8.0	8.0	85.1	84.6	1.3	1.3	2.1	1.7
				18.2		7.4		7.9		84.0		1.4		1.3	
08 January 2025	10:29	Fine	15	19.6	19.6	7.4	7.4	8.7	8.7	94.9	94.9	10.5	10.5	2.7	2.7
				19.6		7.4		8.7		94.8		10.4		2.6	
10 January 2025	10:40	Fine	12	17.4	17.4	7.6	7.6	5.1	5.1	52.9	52.9	6.4	6.4	4.2	4.1
				17.4		7.6		5.1		52.9		6.4		4.0	
13 January 2025	10:02	Fine	16	19.2	19.3	7.9	7.9	9.2	9.2	99.8	99.7	2.9	2.9	2.0	1.6
				19.3		7.9		9.2		99.6		2.9		1.2	
15 January 2025	10:00	Fine	15	15.7	15.7	7.4	7.4	8.7	8.7	87.9	87.4	5.5	5.5	6.1	5.2
				15.7		7.4		8.6		86.9		5.5		4.3	
17 January 2025	10:37	Fine	16	17.6	17.6	7.8	7.8	9.5	9.5	99.3	99.3	2.3	2.3	1.2	1.2
				17.6		7.8		9.5		99.3		2.3		1.2	
20 January 2025	10:20	Cloudy	16	18.7	18.7	7.5	7.5	7.3	7.2	77.8	77.6	3.5	3.5	2.7	2.7
				18.7		7.5		7.2		77.4		3.6		2.6	
22 January 2025	10:10	Cloudy	10	19.2	19.2	7.4	7.4	9.4	9.4	101.2	101.3	7.1	7.1	3.7	4.9
				19.2		7.4		9.4		101.3		7.1		6.0	
24 January 2025	9:56	Fine	23	19.9	19.9	7.3	7.3	8.4	8.4	92.1	92.1	1.9	1.9	3.7	4.9
				19.9		7.3		8.4		92.1		1.8		6.0	
27 January 2025	11:57	Cloudy	28	16.2	16.2	7.7	7.7	7.6	7.6	77.1	77.3	3.7	3.7	1.4	1.5
				16.2		7.7		7.6		77.4		3.7		1.6	

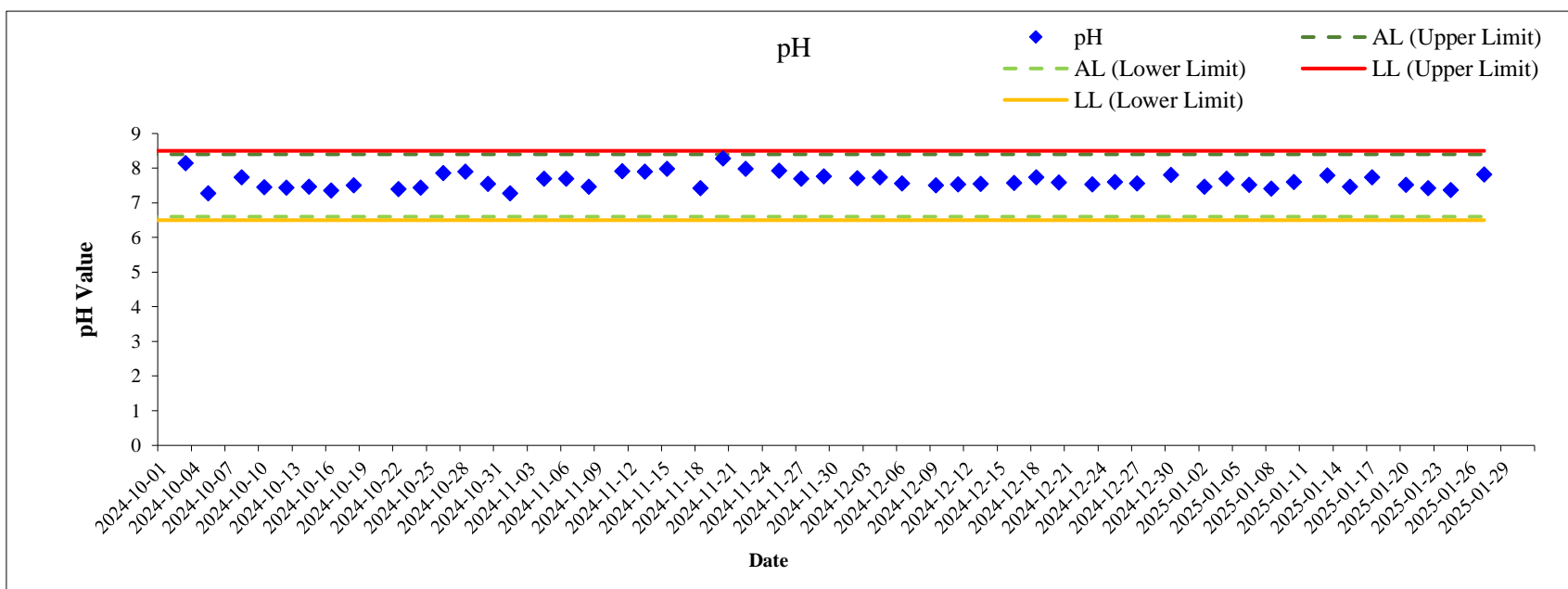
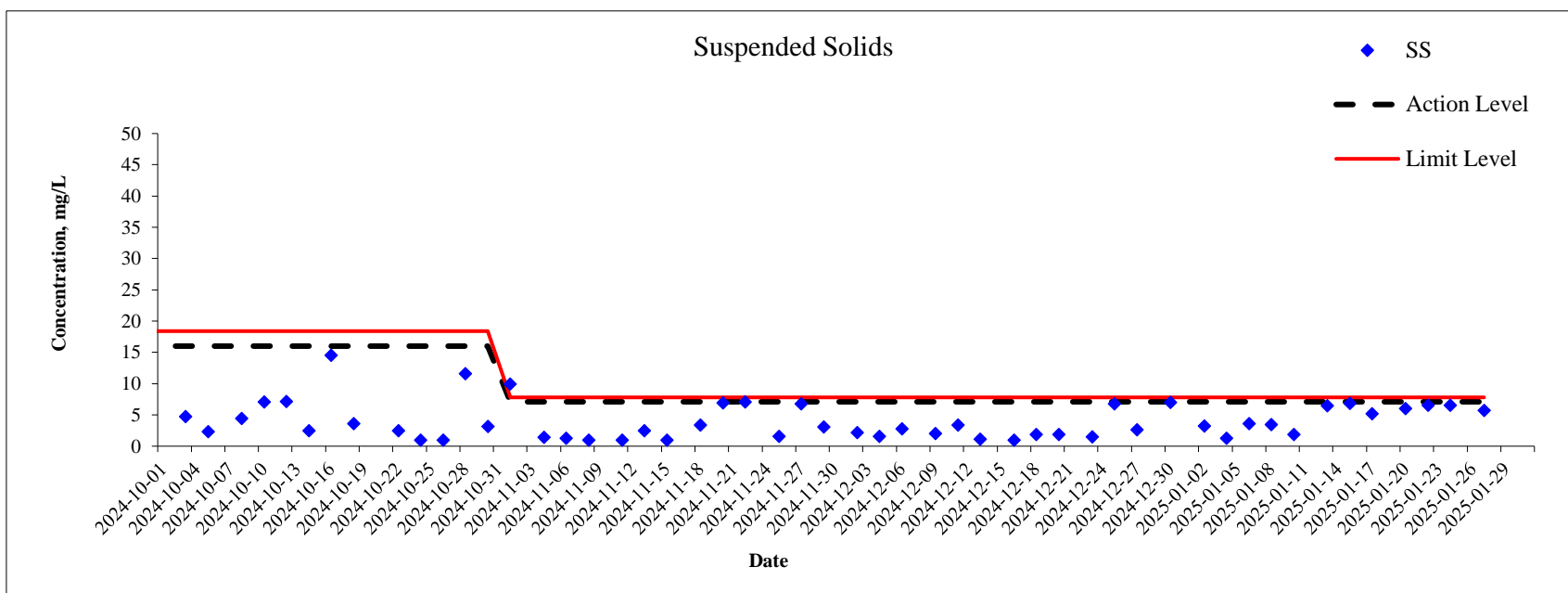
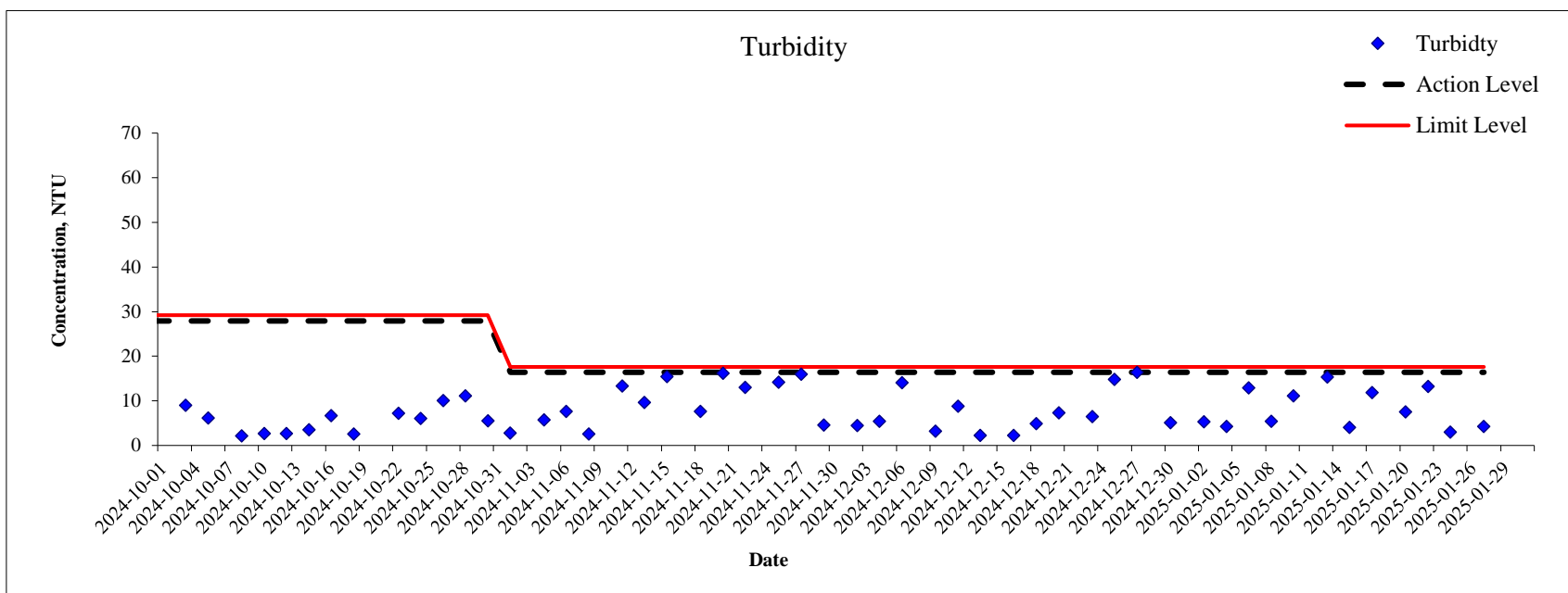
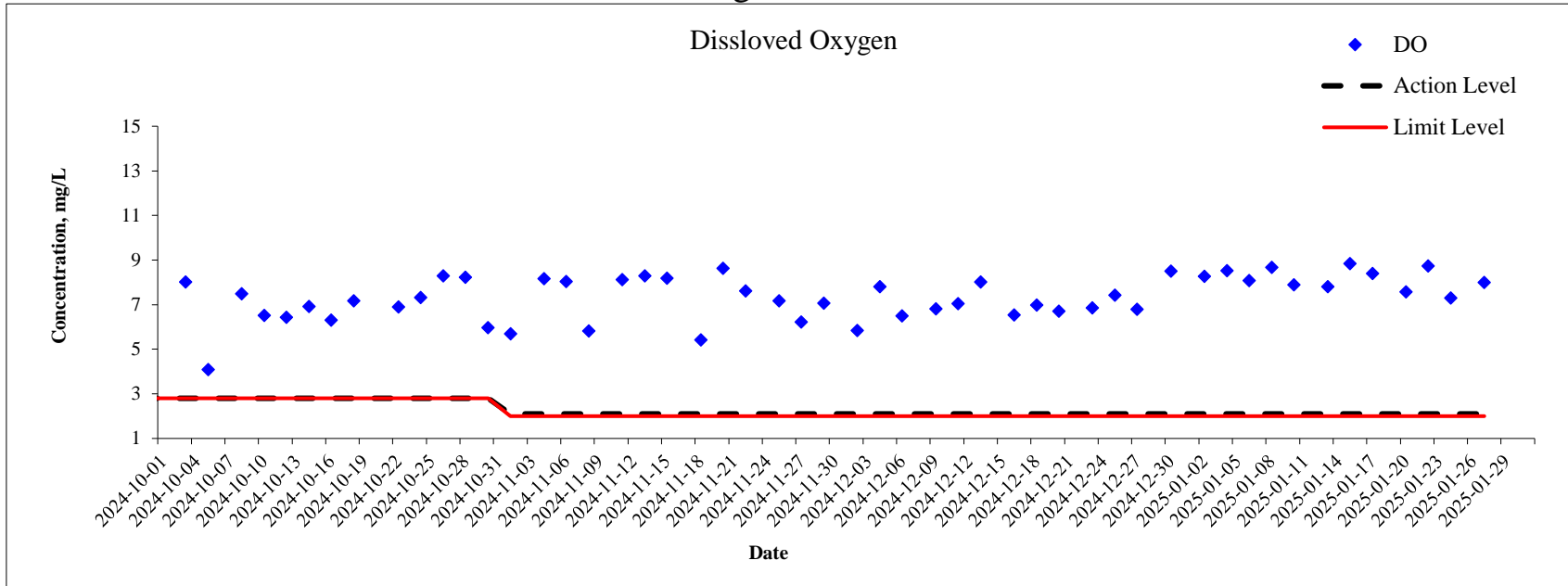
Water Quality Monitoring Location : U2

Date	Start Time	Weather	Water depth (cm)	Temperature (°C)		pH		DO (mg/L)		DO (%)		Turbidity (NTU)		Suspended Solids (mg/L)	
				Value	Average	Value	Average	Value	Average	Value	Average	Value	Average	Value	Average
02 January 2025	8:30	Fine	20	20.4	20.4	7.1	7.1	8.2	8.2	91.3	91.2	7.7	7.7	3.8	3.3
				20.4		7.1		8.2		91.1		7.7		2.8	
04 January 2025	9:30	Fine	23	19.7	19.7	7.7	7.7	8.1	8.0	88.5	88.0	7.3	7.4	5.4	4.1
				19.7		7.7		8.0		87.5		7.4		2.8	
06 January 2025	9:00	Fine	15	18.6	18.6	7.5	7.5	9.1	9.1	97.2	97.0	4.1	4.1	5.9	5.2
				18.5		7.5		9.0		96.7		4.1		4.5	
08 January 2025	10:00	Fine	10	20.9	20.9	7.6	7.7	8.8	8.8	98.7	98.7	5.0	5.0	5.1	5.2
				20.9		7.7		8.8		98.6		5.0		5.3	
10 January 2025	10:02	Fine	10	17.6	17.6	7.5	7.5	8.9	8.9	93.6	93.6	9.0	8.9	6.6	5.5
				17.6		7.5		8.9		93.5		8.9		4.3	
13 January 2025	9:19	Fine	10	18.0	18.0	7.6	7.6	9.2	9.2	97.0	97.0	12.8	12.8	17.0	15.5
				18.0		7.6		9.2		96.9		12.8		14.0	
15 January 2025	9:37	Fine	20	15.6	15.6	7.5	7.5	9.4	9.4	93.9	93.9	8.4	8.4	11.0	9.6
				15.6		7.5		9.5		93.8		8.4		8.2	
17 January 2025	10:14	Fine	4	17.6	17.6	7.7	7.7	9.4	9.4	98.0	98.0	9.5	9.6	10.0	8.6
				17.6		7.7		9.4		98.0		9.6		7.2	
20 January 2025	9:40	Cloudy	15	19.0	19.0	7.6	7.6	8.2	8.2	88.9	88.9	8.9	8.9	8.6	7.5
				19.0		7.6		8.2		88.9		9.0		6.3	
22 January 2025	9:39	Cloudy	24	18.8	18.8	7.5	7.5	9.3	9.3	99.7	99.7	20.3	20.2	10.0	13.5
				18.8		7.5		9.3		99.7		20.2		17.0	
24 January 2025	9:37	Fine	22	19.9	19.9	7.1	7.1	8.4	8.4	92.1	92.1	4.1	4.1	10.0	13.5
				19.9		7.1		8.4		92.1		4.1		17.0	
27 January 2025	9:37	Cloudy	20	17.3	17.3	8.0	8.0	9.5	9.5	99.2	99.2	20.7	20.7	4.9	5.0
				17.3		8.0		9.5		99.2		20.7		5.0	

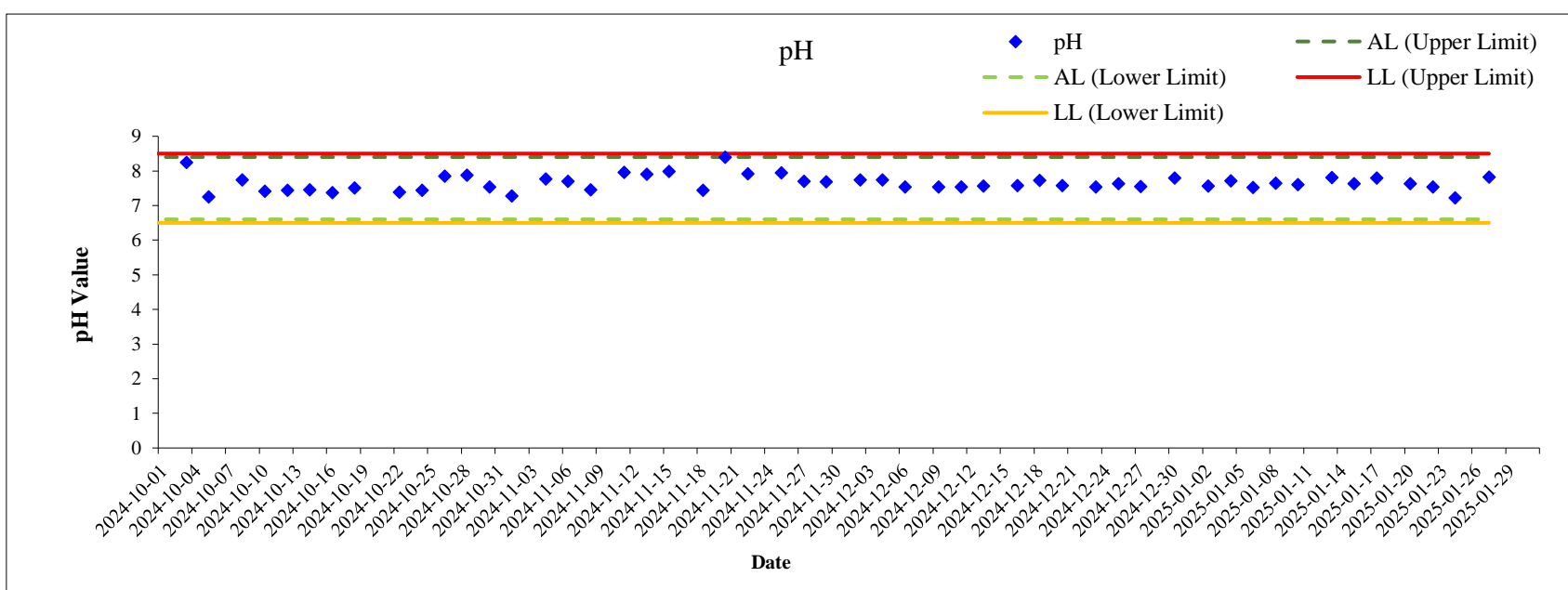
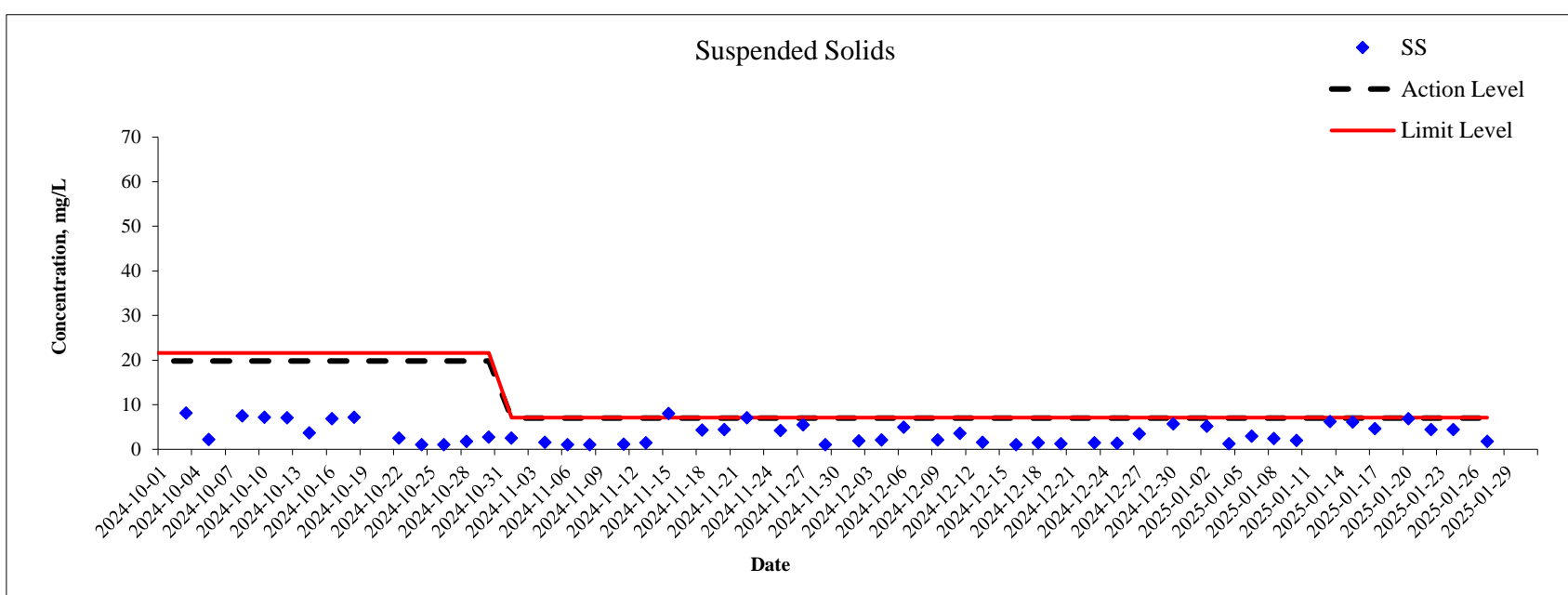
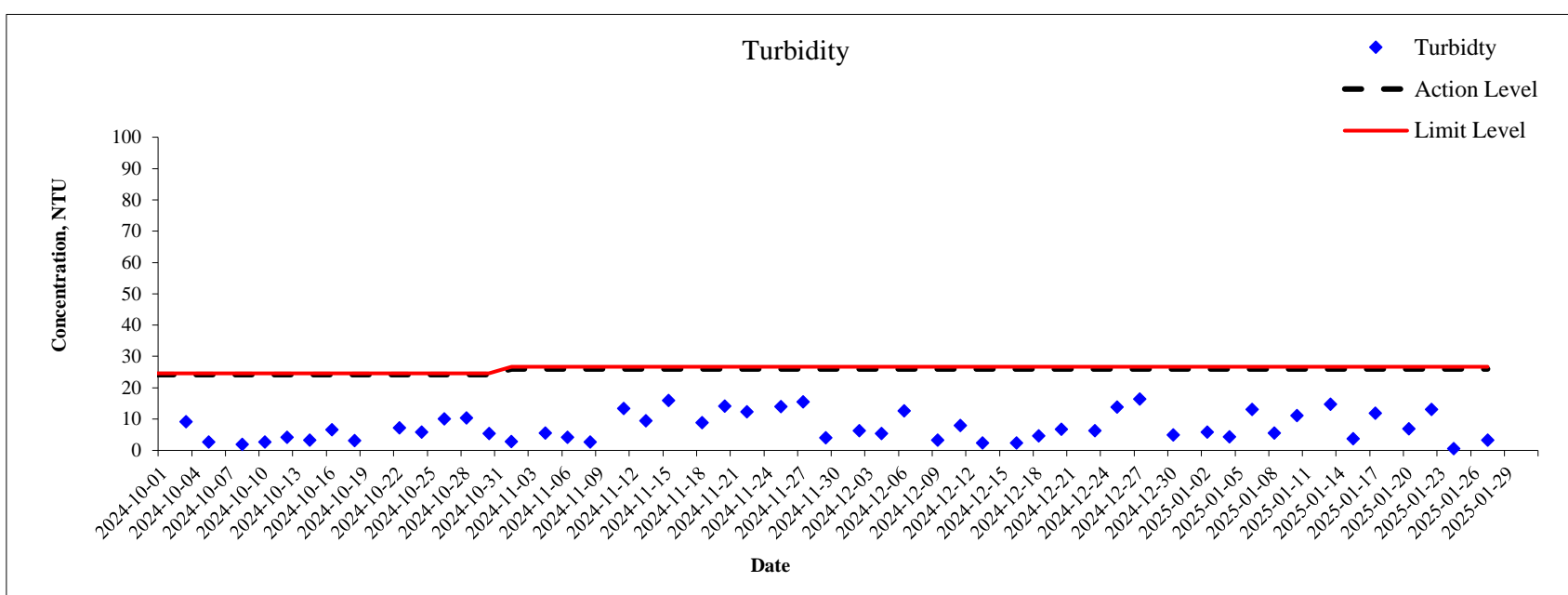
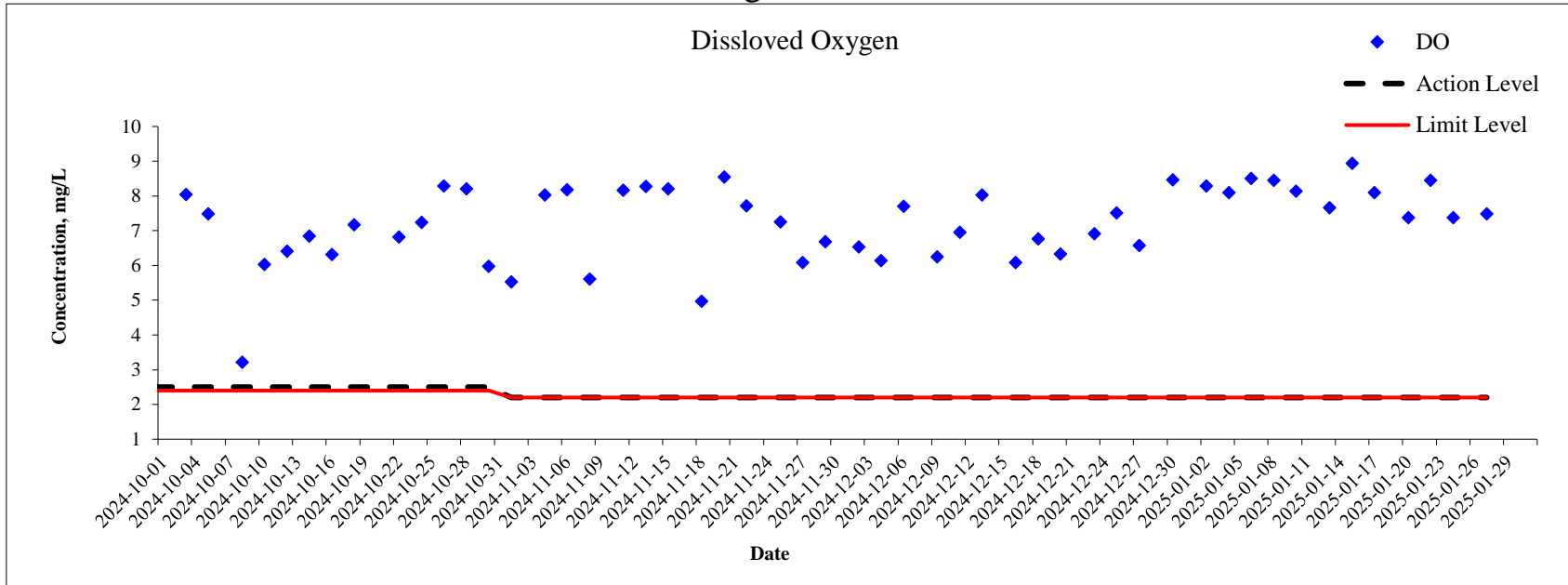
Water Quality Monitoring Location : HT

Date	Start Time	Weather	Water depth (cm)	Temperature (°C)		pH		DO (mg/L)		DO (%)		Turbidity (NTU)		Suspended Solids (mg/L)	
				Value	Average	Value	Average	Value	Average	Value	Average	Value	Average	Value	Average
02 January 2025	12:46	Fine	9	20.5	20.5	7.3	7.3	5.3	5.3	58.9	58.6	2.5	2.5	2.2	2.4
				20.5		7.3		5.2		58.2		2.5		2.6	
04 January 2025	11:10	Fine	6	19.7	19.7	7.7	7.7	8.0	8.0	87.4	87.1	3.8	3.8	2.7	2.4
				19.7		7.7		7.9		86.8		3.8		2.0	
06 January 2025	10:39	Fine	10	18.3	18.3	7.3	7.3	7.3	7.3	77.4	77.2	3.0	3.0	2.0	1.5
				18.3		7.3		7.2		77.0		3.0		1.0	
08 January 2025	12:46	Fine	9	19.8	19.8	7.1	7.1	8.8	8.8	96.7	96.7	8.9	8.9	2.6	2.5
				19.8		7.1		8.8		96.7		8.9		2.4	
10 January 2025	12:01	Fine	6	17.5	17.5	7.7	7.7	6.8	6.8	71.7	71.5	6.6	6.7	5.9	4.8
				17.5		7.7		6.8		71.3		6.8		3.6	
13 January 2025	12:01	Fine	6	17.5	17.5	7.7	7.7	6.8	6.8	71.7	71.5	6.6	6.6	5.2	4.6
				17.5		7.7		6.8		71.3		6.6		4.0	
15 January 2025	11:12	Fine	9	15.7	15.7	7.4	7.4	9.7	9.7	97.8	97.9	12.9	12.9	1.8	1.8
				15.7		7.4		9.7		98.0		12.9		1.8	
17 January 2025	12:00	Fine	8	17.8	17.8	7.8	7.8	8.6	8.6	90.4	90.5	6.1	6.1	7.1	6.9
				17.8		7.8		8.6		90.6		6.1		6.7	
20 January 2025	11:56	Cloudy	6	19.0	19.0	7.8	7.8	8.3	8.3	89.7	89.9	10.3	10.3	7.0	6.0
				19.0		7.8		8.4		90.1		10.3		5.0	
22 January 2025	11:20	Cloudy	5	19.2	19.3	7.6	7.9	9.2	9.2	100.0	99.9	11.1	10.6	5.1	4.9
				19.3		8.2		9.2		99.7		10.2		4.7	
24 January 2025	11:20	Fine	8	21.1	21.1	7.3	7.3	8.7	8.7	97.7	97.7	3.0	3.0	5.1	4.9
				21.1		7.3		8.7		97.7		3.0		4.7	
27 January 2025	11:33	Cloudy	16	14.4	14.4	7.6	7.6	6.2	6.3	60.6	61.5	1.3	1.3	1.8	2.7
				14.4		7.6		6.4		62.3		1.3		3.6	

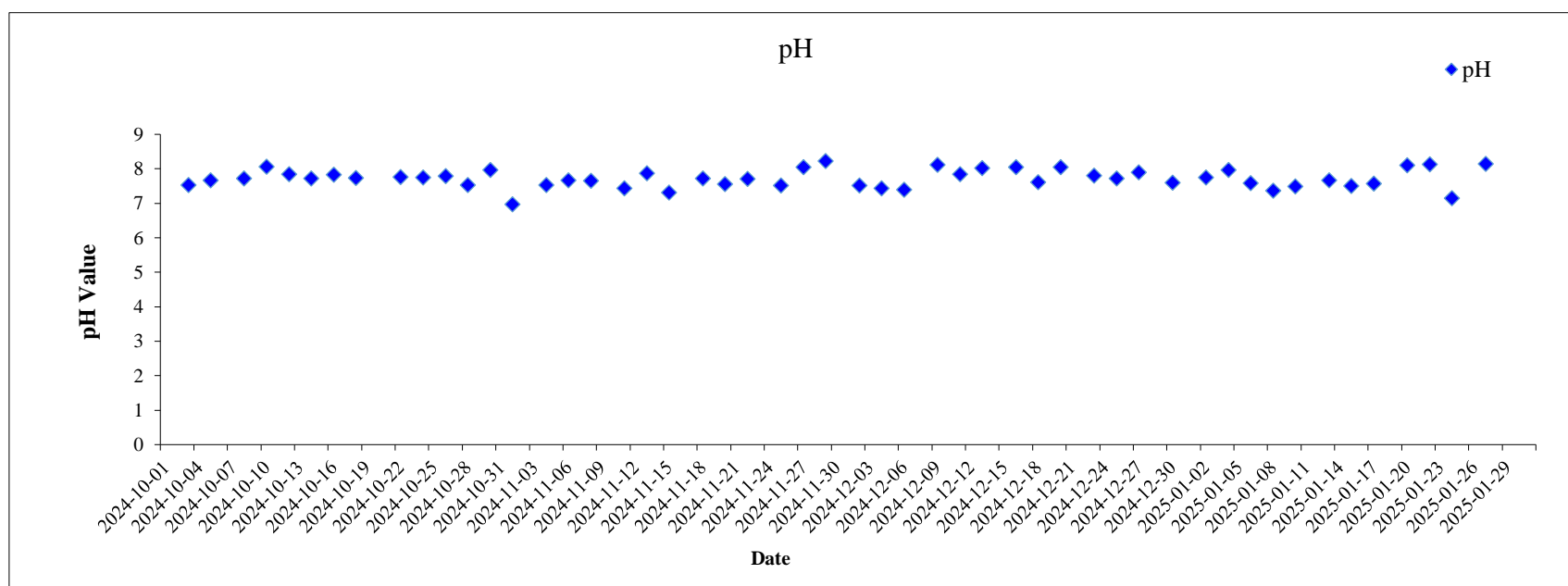
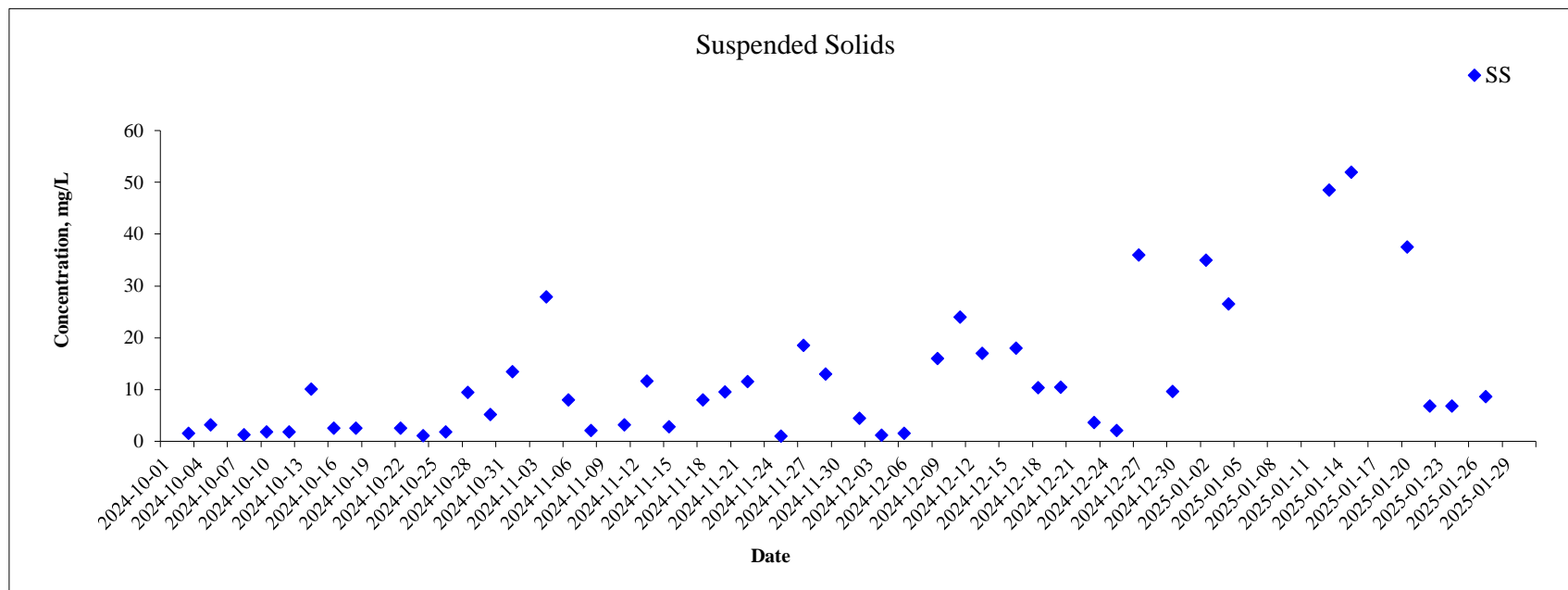
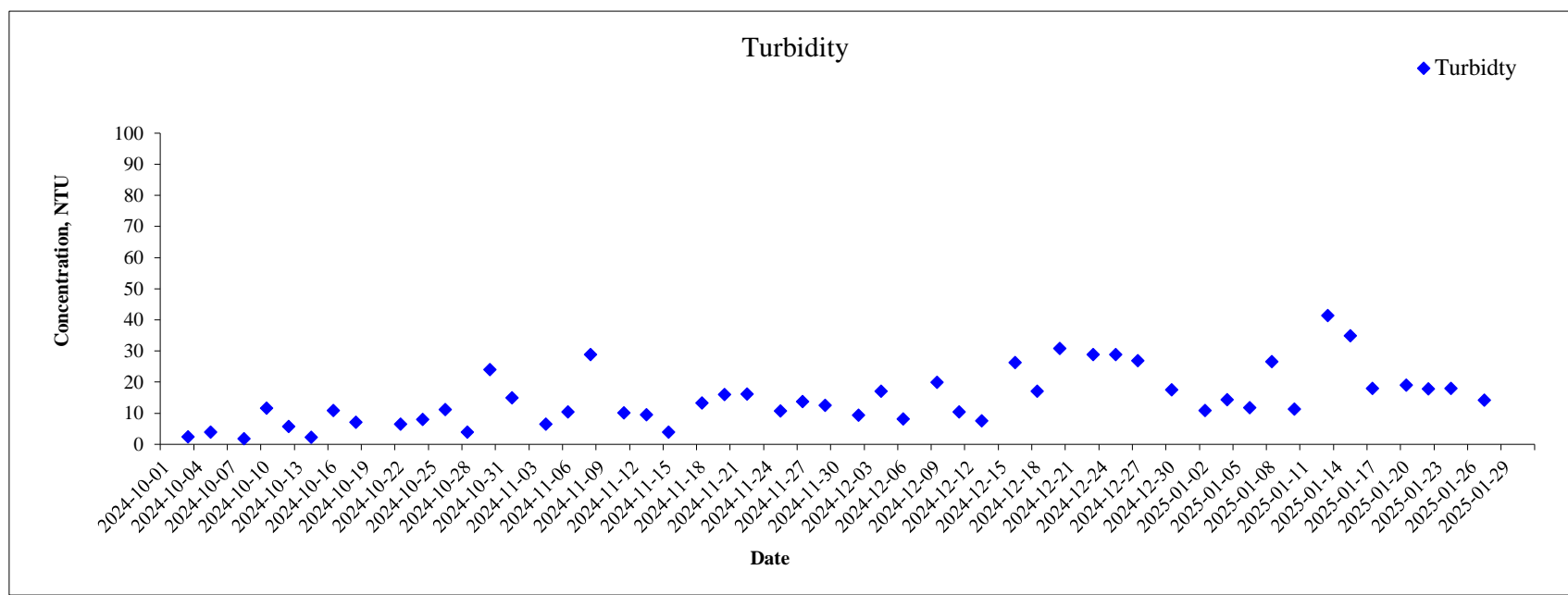
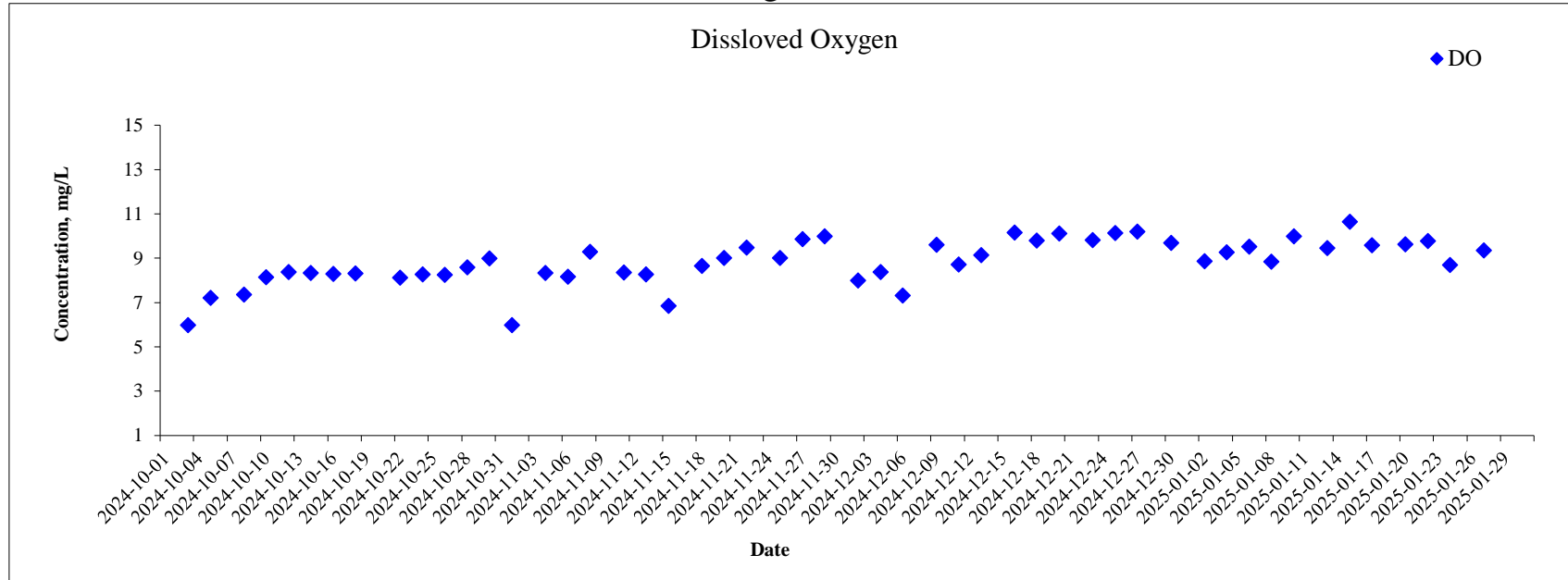
Monitoring Location: TKW1



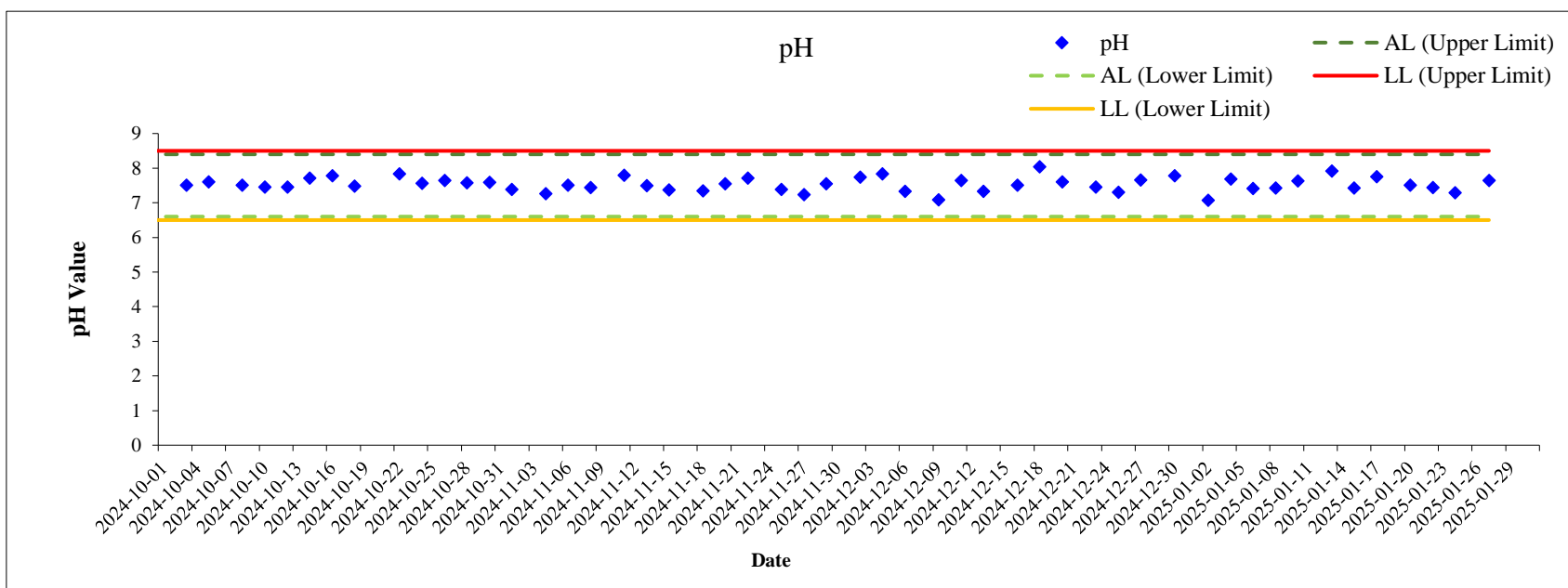
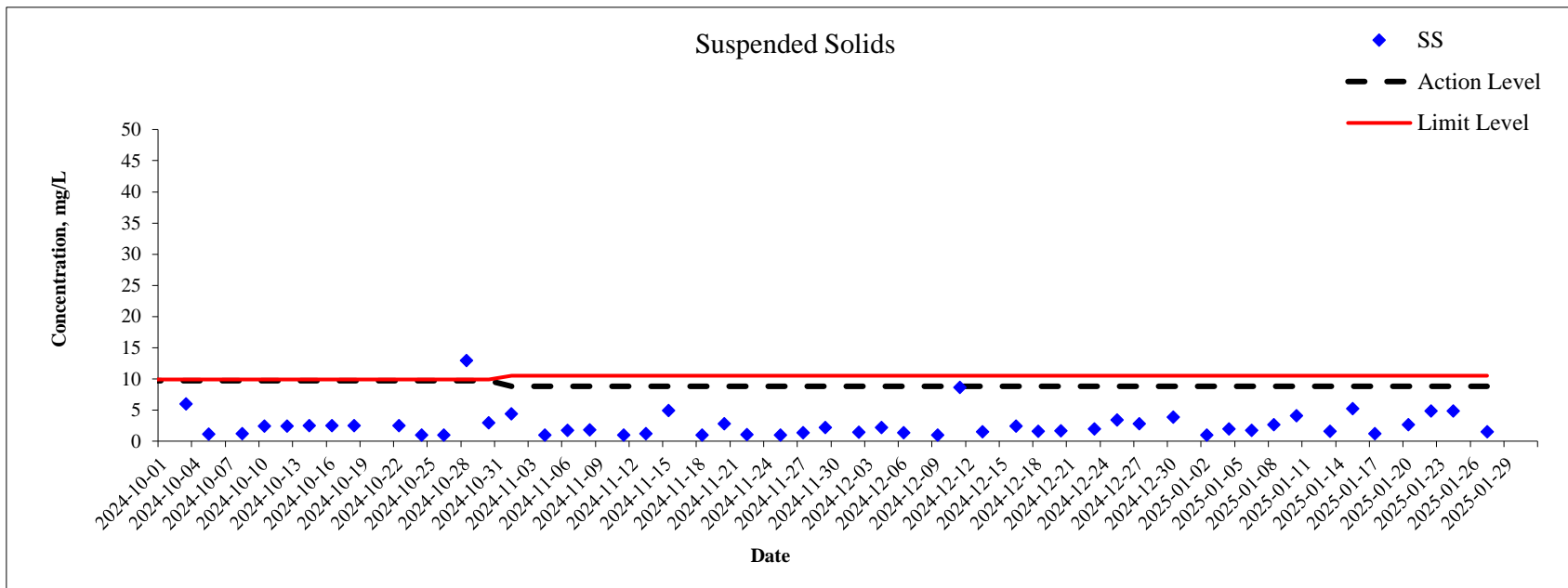
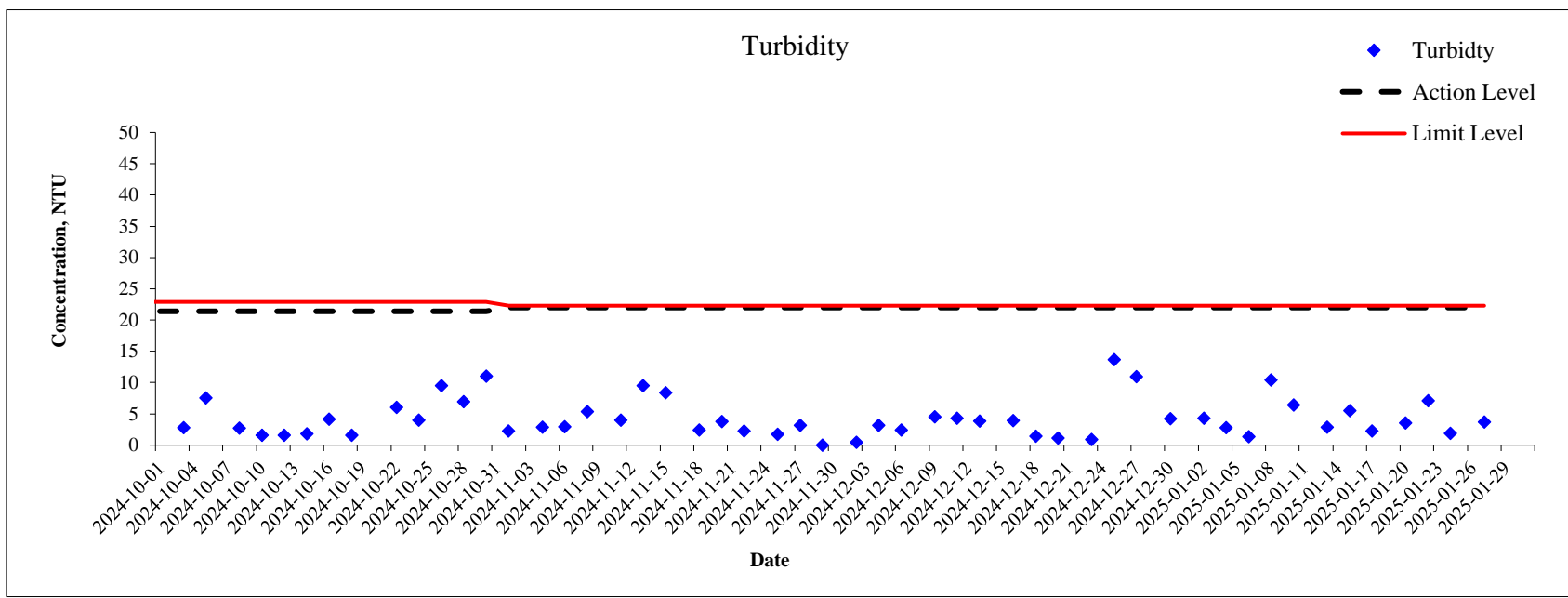
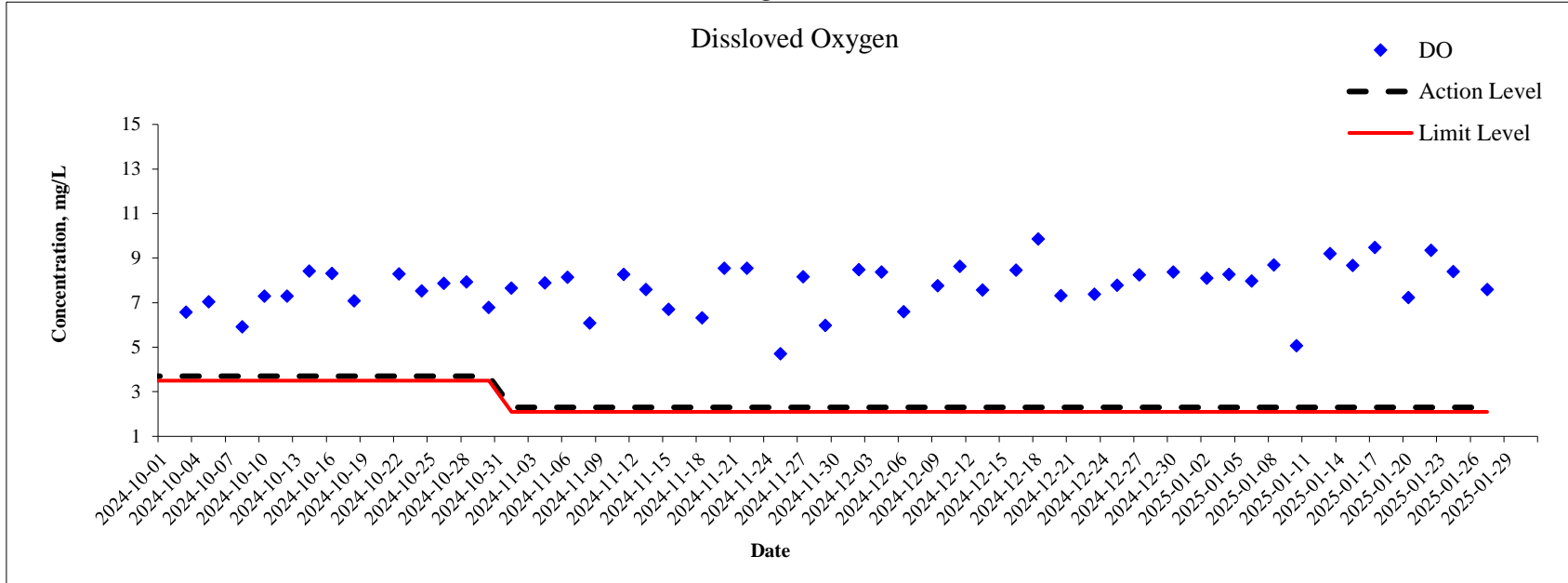
Monitoring Location: TKW



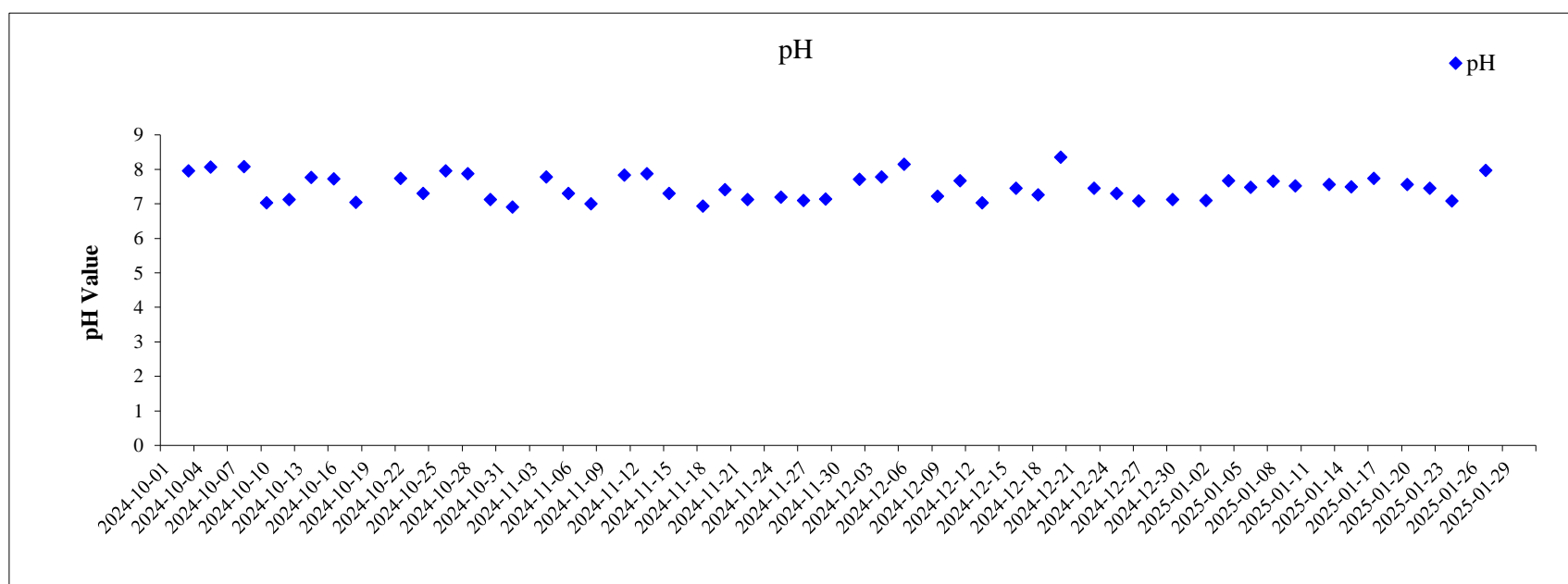
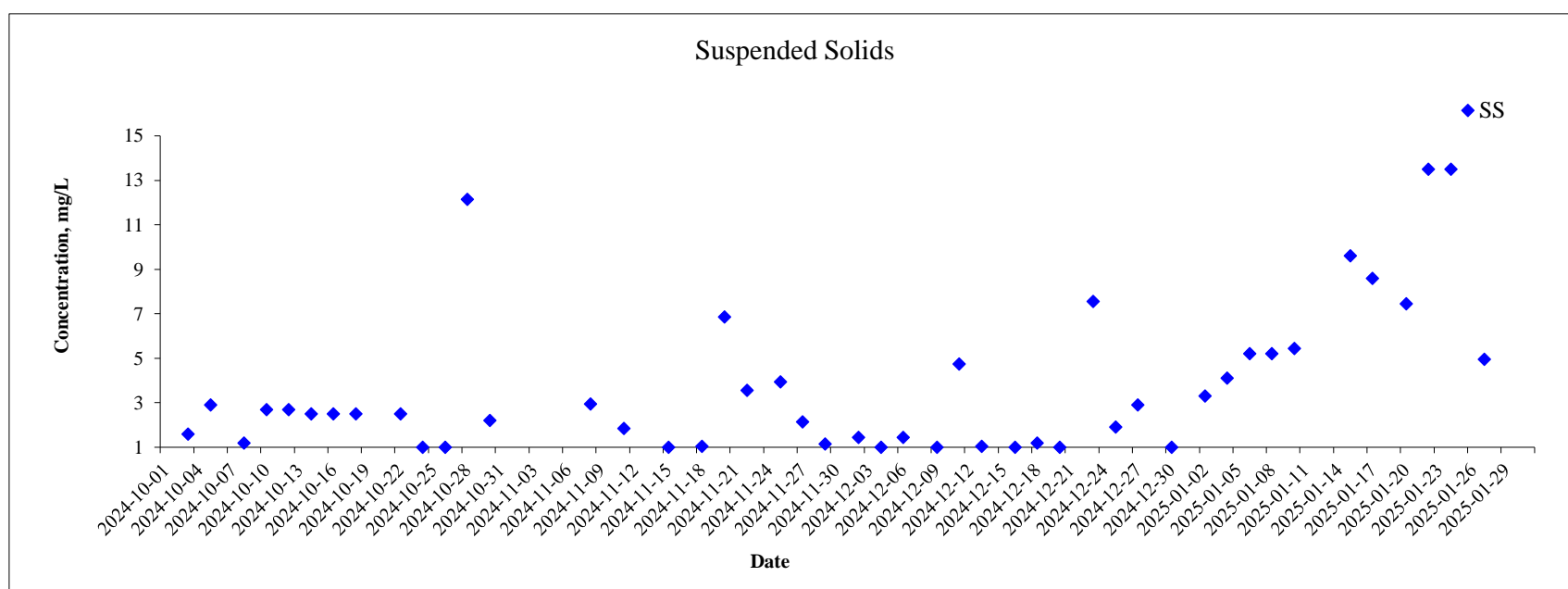
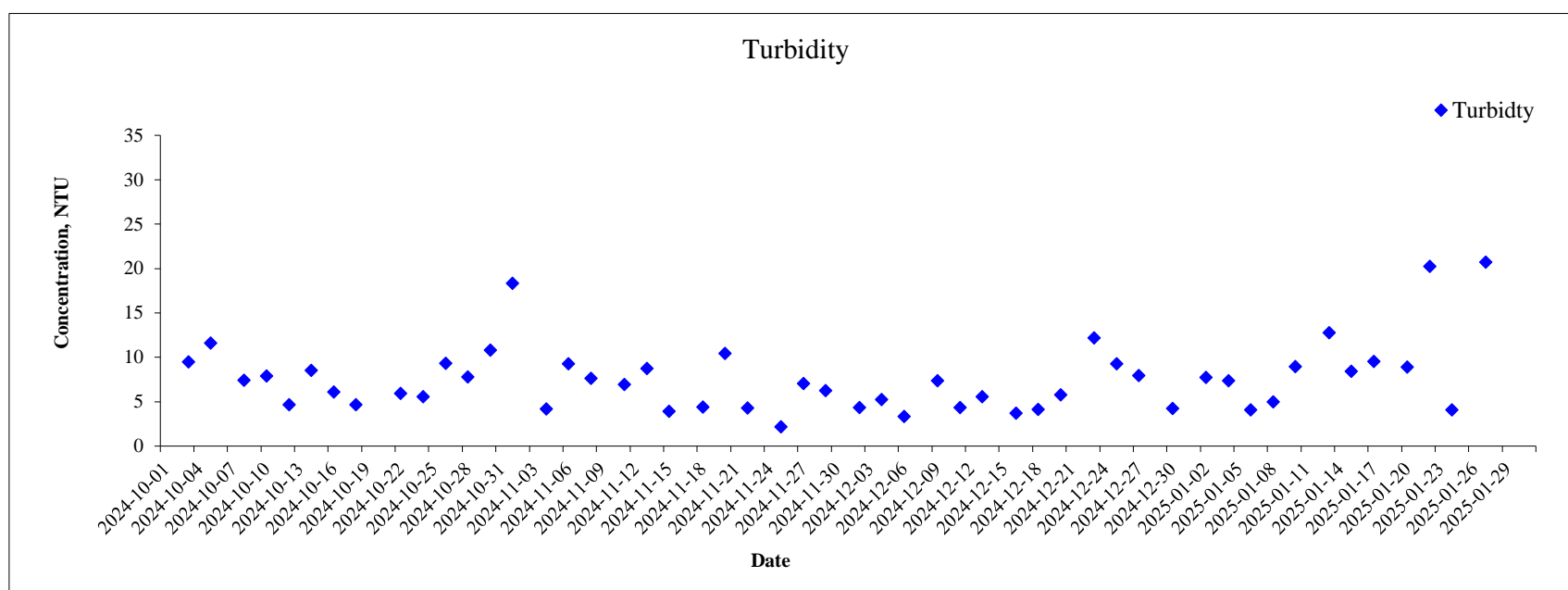
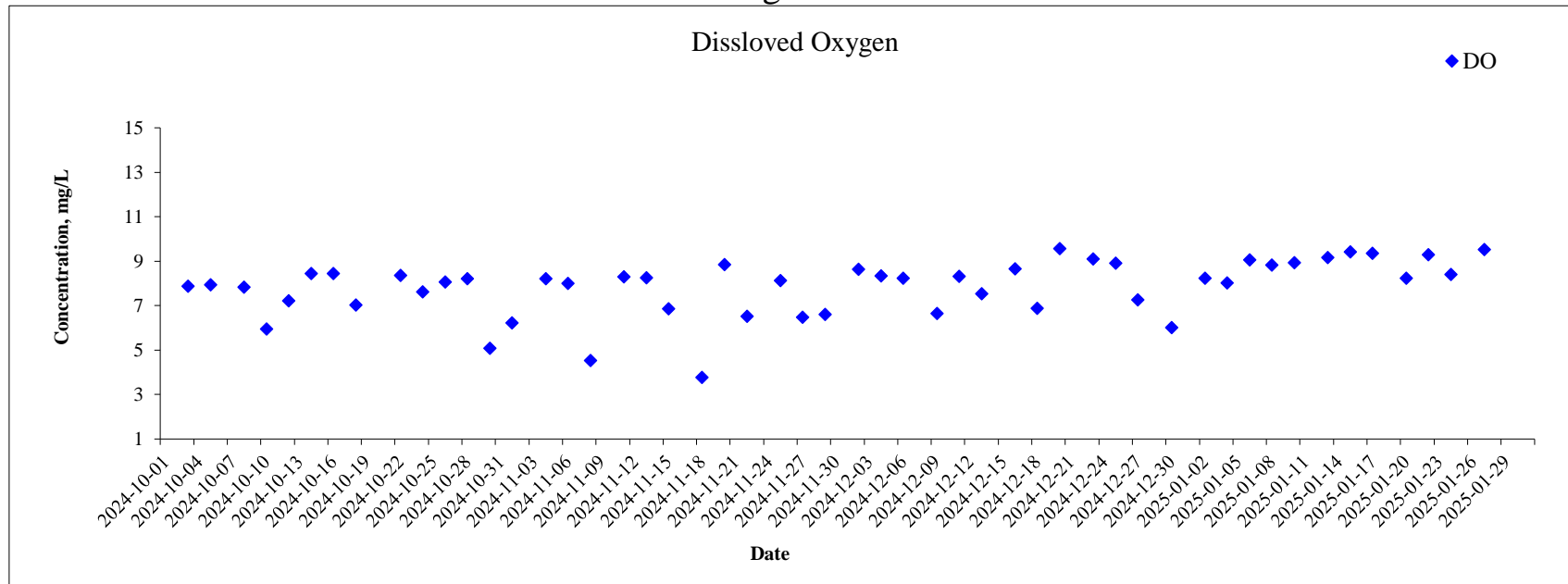
### Monitoring Location: U1



Monitoring Location: SW



Monitoring Location: U2



Monitoring Location: HT

