

Appendix A

Construction Programme

ID	Task Name	Duration	Start	Finish	Qtr 2, 2021 Apr/May/June	Qtr 3, 2021 Jul/Aug/Sep	Qtr 4, 2021 Oct/Nov/Dec	Qtr 1, 2022 Jan/Feb/Mar	Qtr 2, 2022 Apr/May/June	Qtr 3, 2022 Jul/Aug/Sep	Qtr 4, 2022 Oct/Nov/Dec	Qtr 1, 2023 Jan/Feb/Mar	Qtr 2, 2023 Apr/May/June	Qtr 3, 2023 Jul/Aug/Sep	Qtr 4, 2023 Oct/Nov/Dec	Qtr 1, 2024 Jan/Feb/Mar	Qtr 2, 2024 Apr/May/June	Qtr 3, 2024 Jul/Aug/Sep	Qtr 4, 2024 Oct/Nov/Dec	Qtr 1, 2025 Jan/Feb/Mar	Qtr 2, 2025 Apr/May/June	Qtr 3, 2025 Jul/Aug/Sep	Qtr 4, 2025 Oct/Nov/Dec	Qtr 1, 2026 Jan/Feb/Mar	Qtr 2, 2026 Apr/May/June			
1	Programme of YL/2020/03	1836 days	Mon 19/4/21	Tue 28/4/26	▶ Programme																							
2	Contract Date	0 days	Mon 19/4/21	Mon 19/4/21	▶ Project																							
3	Project Dates	1826 days	Wed 28/4/21	Tue 28/4/26	▶ Project																							
4	Starting Date	0 days	Wed 28/4/21	Wed 28/4/21																								
5	Access Date 1	0 days	Wed 28/4/21	Wed 28/4/21																								
6	Access Date 122	0 days	Sat 28/8/21	Sat 28/8/21																								
7	Access Date 275	0 days	Fri 28/1/22	Fri 28/1/22																								
8	Access Date 456	0 days	Thu 28/7/22	Thu 28/7/22																								
9	Completion Dates	913 days	Sat 28/10/23	Tue 28/4/26	▶ Completion																							
10	Completion Date 913 Section 1A1	0 days	Sat 28/10/23	Sat 28/10/23																								
11	Completion Date 913 Section 1A2	0 days	Sat 28/10/23	Sat 28/10/23																								
12	Completion Date 913 Section 1A3	0 days	Sat 28/10/23	Sat 28/10/23																								
13	Completion Date 913 Section 1A4	0 days	Sat 28/10/23	Sat 28/10/23																								
14	Completion Date 913 Section 1A5	0 days	Sat 28/10/23	Sat 28/10/23																								
15	Completion Date 913 Section 1A6	0 days	Sat 28/10/23	Sat 28/10/23																								
16	Completion Date 1278 Section 1B	0 days	Sun 27/10/24	Sun 27/10/24																								
17	Completion Date 1461 Section 2A	0 days	Mon 28/4/25	Mon 28/4/25																								
18	Completion Date 1826 Section 2B	0 days	Tue 28/4/26	Tue 28/4/26																								
19	Access Dates	456 days	Wed 28/4/21	Thu 28/7/22	▶ Access Dates																							
20	Access Date of Portion A1	0 days	Sat 28/8/21	Sat 28/8/21																								
21	Access Date of Portion A2	0 days	Sat 28/8/21	Sat 28/8/21																								
22	Access Date of Portion A3	0 days	Sat 28/8/21	Sat 28/8/21																								
23	Access Date of Portion A4	0 days	Sat 28/8/21	Sat 28/8/21																								
24	Access Date of Portion A5	0 days	Sat 28/8/21	Sat 28/8/21																								
25	Access Date of Portion A6	0 days	Sat 28/8/21	Sat 28/8/21																								
26	Access Date of Portion A7	0 days	Sat 28/8/21	Sat 28/8/21																								
27	Access Date of Portion A8	0 days	Sat 28/8/21	Sat 28/8/21																								
28	Access Date of Portion B1	0 days	Fri 28/1/22	Fri 28/1/22																								
29	Access Date of Portion B2	0 days	Fri 28/1/22	Fri 28/1/22																								
30	Access Date of Portion B3	0 days	Fri 28/1/22	Fri 28/1/22																								
31	Access Date of Portion B4	0 days	Fri 28/1/22	Fri 28/1/22																								
32	Access Date of Portion B5	0 days	Fri 28/1/22	Fri 28/1/22																								
33	Access Date of Portion B6	0 days	Fri 28/1/22	Fri 28/1/22																								
34	Access Date of Portion B7	0 days	Fri 28/1/22	Fri 28/1/22																								
35	Access Date of Portion B8	0 days	Fri 28/1/22	Fri 28/1/22																								
36	Access Date of Portion B9	0 days	Fri 28/1/22	Fri 28/1/22																								
37	Access Date of Portion B10	0 days	Fri 28/1/22	Fri 28/1/22																								
38	Access Date of Portion B11	0 days	Fri 28/1/22	Fri 28/1/22																								
39	Access Date of Portion C1	0 days	Wed 28/4/21	Wed 28/4/21																								
40	Access Date of Portion D1	0 days	Thu 28/7/22	Thu 28/7/22																								
41	Access Date of Portion D2	0 days	Fri 28/1/22	Fri 28/1/22																								
42	Key Dates	365 days	Thu 28/10/21	Fri 28/10/22	▶ Key Dates																							
43	Submission of the Detailed Boulder Survey Report with the Boulder Hazard Mitigation Measures to the Geotechnical Engineering Office of the Civil Engineering and Development Department	0 days	Fri 28/1/22	Fri 28/1/22																								
44	Submission of the Contamination Assessment Report (CAR) and Remediation Action Plan (RAP) to the Environmental Protection Department	0 days	Thu 28/7/22	Thu 28/7/22																								
45	Acceptance in principle by the Project Manager of the Contractor's Design for the Sewage Pumping Station	0 days	Fri 28/10/22	Fri 28/10/22																								
46	Acceptance in principle by the Project Manager of the Contractor's Design of the Boost-up Transformer Room	0 days	Thu 28/10/21	Thu 28/10/21																								
47	Preliminary and General Requirement	1467 days	Tue 20/4/21	Fri 25/4/25	▶ Preliminary and General Requirement																							
48	General Submission	99 days	Tue 20/4/21	Tue 27/7/21	▶ General Submission																							
49	Particulars of underground services detection equipment	7 days	Tue 20/4/21	Mon 26/4/21																								
50	Details of Contract Computer Facilities and Software (PS1.49A)	7 days	Tue 20/4/21	Mon 26/4/21																								
51	Mobile phone for the contract (PS1.16)	7 days	Tue 20/4/21	Mon 26/4/21																								
52	Specialist Provider of Smart Card System (PS29.06)	7 days	Tue 20/4/21	Mon 26/4/21																								

Task Critical Task Milestone ◆ Summary

ID	Task Name	Duration	Start	Finish	Qtr 2, 2021 Apr May Jun	Qtr 3, 2021 Jul Aug Sep	Qtr 4, 2021 Oct Nov Dec	Qtr 1, 2022 Jan Feb Mar	Qtr 2, 2022 Apr May Jun	Qtr 3, 2022 Jul Aug Sep	Qtr 4, 2022 Oct Nov Dec	Qtr 1, 2023 Jan Feb Mar	Qtr 2, 2023 Apr May Jun	Qtr 3, 2023 Jul Aug Sep	Qtr 4, 2023 Oct Nov Dec	Qtr 1, 2024 Jan Feb Mar	Qtr 2, 2024 Apr May Jun	Qtr 3, 2024 Jul Aug Sep	Qtr 4, 2024 Oct Nov Dec	Qtr 1, 2025 Jan Feb Mar	Qtr 2, 2025 Apr May Jun	Qtr 3, 2025 Jul Aug Sep	Qtr 4, 2025 Oct Nov Dec	Qtr 1, 2026 Jan Feb Mar	Qtr 2, 2026 Apr May Jun			
53	Proposal of Security System (PS1.53A)	14 days	Tue 20/4/21	Mon 3/5/21	█																							
54	Professional photographer and use of aircraft (PS1.55S)	1 day	Thu 29/4/21	Thu 29/4/21	█																							
55	Procedures for selecting Subcontractors (ACC C9)	21 days	Tue 20/4/21	Mon 10/5/21	█																							
56	Competitive process for selection of supplier of plant and materials, equipment and insurance (ACC C11)	21 days	Tue 20/4/21	Mon 10/5/21	█																							
57	Designated bank and payment of wages to all the site personnel (PS29.05)	14 days	Tue 20/4/21	Mon 3/5/21	█																							
58	Hygiene and Welfare facilities (PS1.50A)	14 days	Thu 29/4/21	Wed 12/5/21	█																							
59	Necessary Arrangement with Bank to implement the arrangement on payment of wages to Workers (ACC E6)	14 days	Thu 29/4/21	Wed 12/5/21	█																							
60	Professional video production company and a competent video director (PS1.119)	14 days	Thu 29/4/21	Wed 12/5/21	█																							
61	Details of ESIS and DRIS System (PS1.129)	14 days	Thu 29/4/21	Wed 12/5/21	█																							
62	Hoarding Plan (PS1.48)	14 days	Thu 29/4/21	Wed 12/5/21	█																							
63	Transport for PM and Supervisor (PS1.52)	14 days	Thu 29/4/21	Wed 12/5/21	█																							
64	Sub-contractor Management Plan (ACC C5)	30 days	Tue 20/4/21	Wed 19/5/21	█																							
65	Weather Protection Scheme against inclement weather (PS1.86)	30 days	Thu 29/4/21	Fri 28/5/21	█																							
66	Temp Drainage Management Plan	30 days	Thu 29/4/21	Fri 28/5/21	█																							
67	Contingency Plan to deal with Flooding	30 days	Thu 29/4/21	Fri 28/5/21	█																							
68	Supply of Brand New Survey Equipment (PS Appendix 1.17)	30 days	Thu 29/4/21	Fri 28/5/21	█																							
69	Site Uniform (PS1.88)	30 days	Thu 29/4/21	Fri 28/5/21	█																							
70	PII insurance Policy	60 days	Tue 20/4/21	Fri 18/6/21	█																							
71	Book with a certification body acceptable to the Employer the date of audit for the ISO 9001:2015 certification	90 days	Thu 29/4/21	Tue 27/7/21	█																							
72	Completion of Initial General Submission	0 days	Fri 28/5/21	Fri 28/5/21	◆																							
73	Programme	104 days	Tue 20/4/21	Sun 1/8/21	→ Programme																							
74	First Programme (CDP1 3)	14 days	Tue 20/4/21	Mon 3/5/21	█																							
75	Acceptance of the First Programme	30 days	Tue 4/5/21	Wed 2/6/21	█																							
76	Expanded and more detailed version of the first programme (PSA 1.3)	60 days	Thu 3/6/21	Sun 1/8/21	█																							
77	First Monthly Progress Report (PS1.08A)	30 days	Tue 4/5/21	Wed 2/6/21	█																							
78	Completion of Initial Programme Submission	0 days	Wed 2/6/21	Wed 2/6/21	◆																							
79	Appointment of Personnel	99 days	Tue 20/4/21	Tue 27/7/21	→ Appointment of Personnel																							
80	Contractor's Labour Officer (PS29.09)	7 days	Tue 20/4/21	Mon 26/4/21	█																							
81	Contractor's Surveyor (PS1.09)	7 days	Thu 29/4/21	Wed 5/5/21	█																							
82	List of Staff for Construction Management Team (ACC D1)	14 days	Thu 29/4/21	Wed 12/5/21	█																							
83	RSO and SS (ACC D1)	14 days	Thu 29/4/21	Wed 12/5/21	█																							
84	EO and ES (ACC D1)	14 days	Thu 29/4/21	Wed 12/5/21	█																							
85	Site Agents and Employees (PS1.12)	14 days	Thu 29/4/21	Wed 12/5/21	█																							
86	Construction Manager (PS1.12A)	14 days	Thu 29/4/21	Wed 12/5/21	█																							
87	Construction, Landscape and Land Decontamination Leader (PS1.12B)	14 days	Thu 29/4/21	Wed 12/5/21	█																							
88	Geotechnical Engineer, Geologist, Geotechnical Supervisor and GFT (1.12C)	14 days	Thu 29/4/21	Wed 12/5/21	█																							
89	Foreman for Road and Drainage Works	14 days	Thu 29/4/21	Wed 12/5/21	█																							
90	Particulars of Emergency Unit (PS1.99)	14 days	Thu 29/4/21	Wed 12/5/21	█																							
91	Tree Supervisor (PS26.02)	30 days	Tue 20/4/21	Wed 19/5/21	█																							
92	Public Relocation Officer (PS 1.12F)	28 days	Thu 29/4/21	Wed 26/5/21	█																							
93	Quantity Suretying Clerk (PS1.49)	28 days	Thu 29/4/21	Wed 26/5/21	█																							
94	Field and Drafting assistant (PS1.49C)	28 days	Thu 29/4/21	Wed 26/5/21	█																							
95	Independent Checking Engineer (PS1.105)	30 days	Thu 29/4/21	Fri 28/5/21	█																							
96	Employ CEG and TA (PS1.83)	90 days	Thu 29/4/21	Tue 27/7/21	█																							
97	BIM Team Leader (PS1.108)	90 days	Thu 29/4/21	Tue 27/7/21	█																							
98	Completion of Construction Management Team Submission	0 days	Fri 28/5/21	Fri 28/5/21	◆																							
99	Safety	42 days	Tue 20/4/21	Mon 31/5/21	→ Safety																							
100	Draft Construction Health and Safety Plan (ACC D6)	14 days	Tue 20/4/21	Mon 3/5/21	█																							
101	Ad-hoc meeting with Supervisor to discuss the draft Safety Plan (ACC D6)	7 days	Tue 4/5/21	Mon 10/5/21	█																							
102	Monthly Reports on Safety Performance (ACC D28)	30 days	Tue 20/4/21	Wed 19/5/21	█																							
103	Monthly Safety Report	30 days	Tue 20/4/21	Wed 19/5/21	█																							

Task █ Critical Task █ Milestone ◆ Summary →

ID	Task Name	Duration	Start	Finish	Qtr 2, 2021 Apr May Jun	Qtr 3, 2021 Jul Aug Sep	Qtr 4, 2021 Oct Nov Dec	Qtr 1, 2022 Jan Feb Mar	Qtr 2, 2022 Apr May Jun	Qtr 3, 2022 Jul Aug Sep	Qtr 4, 2022 Oct Nov Dec	Qtr 1, 2023 Jan Feb Mar	Qtr 2, 2023 Apr May Jun	Qtr 3, 2023 Jul Aug Sep	Qtr 4, 2023 Oct Nov Dec	Qtr 1, 2024 Jan Feb Mar	Qtr 2, 2024 Apr May Jun	Qtr 3, 2024 Jul Aug Sep	Qtr 4, 2024 Oct Nov Dec	Qtr 1, 2025 Jan Feb Mar	Qtr 2, 2025 Apr May Jun	Qtr 3, 2025 Jul Aug Sep	Qtr 4, 2025 Oct Nov Dec	Qtr 1, 2026 Jan Feb Mar	Qtr 2, 2026 Apr May Jun			
104	Submission of Safety Plan (ACC D6)	35 days	Tue 20/4/21	Mon 24/5/21	█																							
105	Establish and conduct first SSC and SSMC meeting (PS1.65)	40 days	Tue 20/4/21	Sat 29/5/21	█																							
106	Site Traffic Safety Management Plan (PS1.71C)	42 days	Tue 20/4/21	Mon 31/5/21	█																							
107	Completion of Initial Safety Submission	0 days	Mon 31/5/21	Mon 31/5/21	◆																							
108	Environmental	328 days	Tue 20/4/21	Sun 13/3/22	→ Environmental																							
109	Register of the DDF and Trip Ticket System	14 days	Tue 20/4/21	Mon 3/5/21	█																							
110	Draft Environmental Management Plan (ACC D20, PS1.97)	21 days	Tue 20/4/21	Mon 10/5/21	█																							
111	Daily Cleaning Supervisor (PS1.32)	21 days	Tue 20/4/21	Mon 10/5/21	█																							
112	Inspection Checklist for Daily Cleaning (PS1.32)	21 days	Tue 20/4/21	Mon 10/5/21	█																							
113	Monthly Reports on Environmental Management (PS1.98)	30 days	Tue 20/4/21	Wed 19/5/21	█																							
114	Rodents Disinfestation Operation	14 days	Thu 29/4/21	Wed 12/5/21	█																							
115	Apply for registration as Chemical Waste Producer (GS25.28)	21 days	Thu 29/4/21	Wed 19/5/21	█																							
116	Trip Ticket System Proposal	21 days	Thu 29/4/21	Wed 19/5/21	█																							
117	Site Management Plan for implementation of Trip Ticket System (PS25.25S)	45 days	Tue 20/4/21	Thu 3/6/21	█																							
118	Finalized Environmental Management Plan	45 days	Tue 20/4/21	Thu 3/6/21	█																							
119	Appoint ET and ET Leader	42 days	Tue 20/4/21	Mon 31/5/21	█																							
120	Application of Discharge License - First Batch	45 days	Thu 29/4/21	Sat 12/6/21	█																							
121	Application of Discharge License - Second Batch	45 days	Sat 28/8/21	Mon 11/10/21		█																						
122	Application of Discharge License - Third Batch	45 days	Fri 28/1/22	Sun 13/3/22			█																					
123	Completion of Initial Environmental Submission	0 days	Thu 3/6/21	Thu 3/6/21	◆																							
124	Ready for Commencement of Site Works	0 days	Thu 3/6/21	Thu 3/6/21	◆																							
125	Public Relation	60 days	Thu 29/4/21	Sun 27/6/21	→ Public Relation																							
126	Provision of PRO (PS1.12F)	30 days	Thu 29/4/21	Fri 28/5/21	█																							
127	Setup 24-hour telephone line cum information centre	60 days	Thu 29/4/21	Sun 27/6/21	█																							
128	Traffic Management	147 days	Thu 29/4/21	Wed 22/9/21	→ Traffic Management																							
129	Traffic Consultant and Traffic Engineer (PS1.16A)	7 days	Thu 29/4/21	Wed 5/5/21	█																							
130	Prepare Detailed Construction Sequence with associated TTA and obtain endorsement in principle	24 days	Thu 1/7/21	Sat 24/7/21	█																							
131	Setup TMLG	30 days	Sun 25/7/21	Mon 23/8/21	█																							
132	Setup SLG	30 days	Sun 25/7/21	Mon 23/8/21	█																							
133	Arrange First TMLG meeting	30 days	Tue 24/8/21	Wed 22/9/21	█																							
134	Excavation Permit	395 days	Thu 29/4/21	Sat 28/5/22	→ Excavation Permit																							
135	Request employer to apply for XP (ACC D18)	7 days	Thu 29/4/21	Wed 5/5/21	█																							
136	1st Batch of XP (Ping Ha Road)	100 days	Thu 6/5/21	Fri 13/8/21	→ 1st Batch of XP (Ping Ha Road)																							
137	Prepare particular for XP Application	40 days	Thu 6/5/21	Mon 14/6/21	█																							
138	Application and approval of Excavation Permit for street maintained by HyD - (ACC D18)	60 days	Tue 15/6/21	Fri 13/8/21	█																							
139	2nd Batch of XP (Ha Tsuen Road)	120 days	Sun 29/8/21	Sun 26/12/21	→ 2nd Batch of XP (Ha Tsuen Road)																							
140	Prepare particular for XP Application	60 days	Sun 29/8/21	Wed 27/10/21	█																							
141	Application and approval of Excavation Permit for street maintained by HyD -(ACC D18)	60 days	Thu 28/10/21	Sun 26/12/21	█																							
142	3rd Batch of XP (Fung Kong Tsuen Road)	120 days	Sat 29/1/22	Sat 28/5/22	→ 3rd Batch of XP (Fung Kong Tsuen Road)																							
143	Prepare particular for XP Application	60 days	Sat 29/1/22	Tue 29/3/22	█																							
144	Application and approval of Excavation Permit for street maintained by HyD -(ACC D18)	60 days	Wed 30/3/22	Sat 28/5/22	█																							
145	Utilities Works	1458 days	Thu 29/4/21	Fri 25/4/25	→ Utilities Works																							
146	Setup of Utilities Liaison Group	90 days	Thu 29/4/21	Tue 27/7/21	█																							
147	Diversion Scheme of Existing Utilities, if any	335 days	Wed 28/7/21	Mon 27/6/22	→ Diversion Scheme of Existing Utilities, if any																							
148	Drainage Diversion (Existing Stream at Road D1)	150 days	Sat 29/1/22	Mon 27/6/22	█																							
149	Existing Service at Road D1 and L51	60 days	Sun 26/9/21	Wed 24/11/21	█																							
150	Existing Service at Road L53 and L54	60 days	Wed 28/7/21	Sat 25/9/21	█																							
151	New Utilities Connection	684 days	Mon 12/6/23	Fri 25/4/25	→ New Utilities Connection																							
152	Watermain	634 days	Tue 1/8/23	Fri 25/4/25	→ Watermain																							
153	Road D1, L51 and Ha Tsuen Road	60 days	Sun 23/6/24	Wed 21/8/24	█																							
154	Road L53 and L54	30 days	Tue 1/8/23	Wed 30/8/23	█																							
155	Ping Ha Road	30 days	Thu 27/3/25	Fri 25/4/25	█																							
156	Road Lighting System	420 days	Wed 30/8/23	Tue 22/10/24	→ Road Lighting System																							
157	Road D1 and L51	60 days	Sat 24/8/24	Tue 22/10/24	█																							
158	Road L53 and L54	60 days	Wed 30/8/23	Sat 28/10/23	█																							

Task █ Critical Task █ Milestone ◆ Summary →

ID	Task Name	Duration	Start	Finish	Qtr 2, 2021 Apr May Jun	Qtr 3, 2021 Jul Aug Sep	Qtr 4, 2021 Oct Nov Dec	Qtr 1, 2022 Jan Feb Mar	Qtr 2, 2022 Apr May Jun	Qtr 3, 2022 Jul Aug Sep	Qtr 4, 2022 Oct Nov Dec	Qtr 1, 2023 Jan Feb Mar	Qtr 2, 2023 Apr May Jun	Qtr 3, 2023 Jul Aug Sep	Qtr 4, 2023 Oct Nov Dec	Qtr 1, 2024 Jan Feb Mar	Qtr 2, 2024 Apr May Jun	Qtr 3, 2024 Jul Aug Sep	Qtr 4, 2024 Oct Nov Dec	Qtr 1, 2025 Jan Feb Mar	Qtr 2, 2025 Apr May Jun	Qtr 3, 2025 Jul Aug Sep	Qtr 4, 2025 Oct Nov Dec	Qtr 1, 2026 Jan Feb Mar	Qtr 2, 2026 Apr May Jun
159	CLP	379 days	Mon 12/6/23	Mon 24/6/24	CLP																				
160	Road D1 and L51	60 days	Fri 26/4/24	Mon 24/6/24	Road D1 and L51																				
161	Road L53 and L54	60 days	Mon 12/6/23	Thu 10/8/23	Road L53 and L54																				
162	Telecom (HKT, HGC, HKBN)	379 days	Mon 12/6/23	Mon 24/6/24	Telecom (HKT, HGC, HKBN)																				
163	Road D1 and L51	60 days	Fri 26/4/24	Mon 24/6/24	Road D1 and L51																				
164	Road L53 and L54	60 days	Mon 12/6/23	Thu 10/8/23	Road L53 and L54																				
165	Procurement	300 days	Wed 28/4/21	Mon 21/2/22	Procurement																				
166	Subcontracting / Procurement	132 days	Thu 29/4/21	Tue 7/9/21	Subcontracting / Procurement																				
167	Traffic Consultant	63 days	Thu 29/4/21	Wed 30/6/21	Traffic Consultant																				
168	Subletting	28 days	Thu 29/4/21	Wed 26/5/21	Subletting																				
169	Submission and Approval	35 days	Thu 27/5/21	Wed 30/6/21	Submission and Approval																				
170	Independent Checking Engineer	63 days	Thu 29/4/21	Wed 30/6/21	Independent Checking Engineer																				
171	Subletting	28 days	Thu 29/4/21	Wed 26/5/21	Subletting																				
172	Submission and Approval	35 days	Thu 27/5/21	Wed 30/6/21	Submission and Approval																				
173	PM's Accomodation (MiC Method)	63 days	Thu 29/4/21	Wed 30/6/21	PM's Accomodation (MiC Method)																				
174	Subletting	28 days	Thu 29/4/21	Wed 26/5/21	Subletting																				
175	Submission and Approval	35 days	Thu 27/5/21	Wed 30/6/21	Submission and Approval																				
176	Environmental Team and Team Leader	63 days	Thu 29/4/21	Wed 30/6/21	Environmental Team and Team Leader																				
177	Subletting	28 days	Thu 29/4/21	Wed 26/5/21	Subletting																				
178	Submission and Approval	35 days	Thu 27/5/21	Wed 30/6/21	Submission and Approval																				
179	Tree Survey and Treatment	63 days	Thu 29/4/21	Wed 30/6/21	Tree Survey and Treatment																				
180	Subletting	28 days	Thu 29/4/21	Wed 26/5/21	Subletting																				
181	Submission and Approval	35 days	Thu 27/5/21	Wed 30/6/21	Submission and Approval																				
182	Specialist for Decontamination Works	63 days	Thu 29/4/21	Wed 30/6/21	Specialist for Decontamination Works																				
183	Subletting	28 days	Thu 29/4/21	Wed 26/5/21	Subletting																				
184	Submission and Approval	35 days	Thu 27/5/21	Wed 30/6/21	Submission and Approval																				
185	BIM Service	63 days	Thu 29/4/21	Wed 30/6/21	BIM Service																				
186	Subletting	28 days	Thu 29/4/21	Wed 26/5/21	Subletting																				
187	Submission and Approval	35 days	Thu 27/5/21	Wed 30/6/21	Submission and Approval																				
188	Rebar Supply	63 days	Wed 7/7/21	Tue 7/9/21	Rebar Supply																				
189	Subletting	28 days	Wed 7/7/21	Tue 3/8/21	Subletting																				
190	Submission and Approval	35 days	Wed 4/8/21	Tue 7/9/21	Submission and Approval																				
191	Concrete Supply	63 days	Wed 7/7/21	Tue 7/9/21	Concrete Supply																				
192	Subletting	28 days	Wed 7/7/21	Tue 3/8/21	Subletting																				
193	Submission and Approval	35 days	Wed 4/8/21	Tue 7/9/21	Submission and Approval																				
194	Bitumen Supply and Paving	63 days	Wed 7/7/21	Tue 7/9/21	Bitumen Supply and Paving																				
195	Subletting	28 days	Wed 7/7/21	Tue 3/8/21	Subletting																				
196	Submission and Approval	35 days	Wed 4/8/21	Tue 7/9/21	Submission and Approval																				
197	Ground Investigation Works	63 days	Wed 7/7/21	Tue 7/9/21	Ground Investigation Works																				
198	Subletting	28 days	Wed 7/7/21	Tue 3/8/21	Subletting																				
199	Submission and Approval	35 days	Wed 4/8/21	Tue 7/9/21	Submission and Approval																				
200	Demolition Works	63 days	Wed 7/7/21	Tue 7/9/21	Demolition Works																				
201	Subletting	28 days	Wed 7/7/21	Tue 3/8/21	Subletting																				
202	Submission and Approval	35 days	Wed 4/8/21	Tue 7/9/21	Submission and Approval																				
203	Pipe Jacking Works	63 days	Thu 29/4/21	Wed 30/6/21	Pipe Jacking Works																				
204	Subletting	28 days	Thu 29/4/21	Wed 26/5/21	Subletting																				
205	Submission and Approval	35 days	Thu 27/5/21	Wed 30/6/21	Submission and Approval																				
206	Road Marking	63 days	Wed 7/7/21	Tue 7/9/21	Road Marking																				
207	Subletting	28 days	Wed 7/7/21	Tue 3/8/21	Subletting																				
208	Submission and Approval	35 days	Wed 4/8/21	Tue 7/9/21	Submission and Approval																				
209	Road Lighting System (Design and Install)	63 days	Wed 7/7/21	Tue 7/9/21	Road Lighting System (Design and Install)																				
210	Subletting	28 days	Wed 7/7/21	Tue 3/8/21	Subletting																				
211	Submission and Approval	35 days	Wed 4/8/21	Tue 7/9/21	Submission and Approval																				
212	Landscaping Works	63 days	Wed 7/7/21	Tue 7/9/21	Landscaping Works																				
213	Subletting	28 days	Wed 7/7/21	Tue 3/8/21	Subletting																				
214	Submission and Approval	35 days	Wed 4/8/21	Tue 7/9/21	Submission and Approval																				
215	E&M Works	63 days	Wed 7/7/21	Tue 7/9/21	E&M Works																				
216	Subletting	28 days	Wed 7/7/21	Tue 3/8/21	Subletting																				

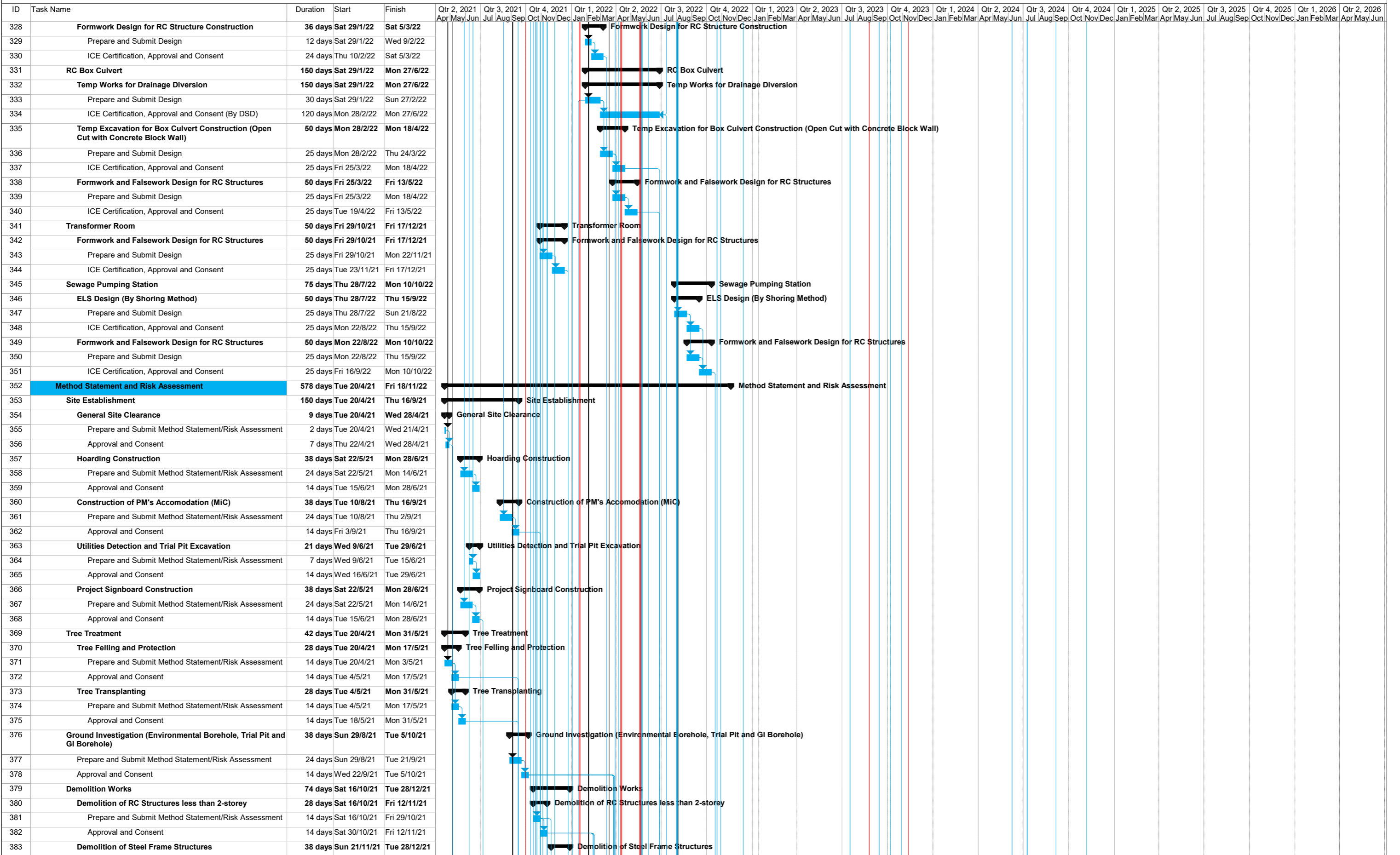
Task █ Critical Task █ Milestone ◆ Summary ▬

ID	Task Name	Duration	Start	Finish	Qtr 2, 2021	Qtr 3, 2021	Qtr 4, 2021	Qtr 1, 2022	Qtr 2, 2022	Qtr 3, 2022	Qtr 4, 2022	Qtr 1, 2023	Qtr 2, 2023	Qtr 3, 2023	Qtr 4, 2023	Qtr 1, 2024	Qtr 2, 2024	Qtr 3, 2024	Qtr 4, 2024	Qtr 1, 2025	Qtr 2, 2025	Qtr 3, 2025	Qtr 4, 2025	Qtr 1, 2026	Qtr 2, 2026
217	Submission and Approval	35 days	Wed 4/8/21	Tue 7/9/21																					
218	Major Materials Fabrication and Delivery	300 days	Wed 28/4/21	Mon 21/2/22																					
219	MiC Modular for PM's Accomodation	90 days	Tue 10/8/21	Sun 7/11/21																					
220	Fabrication and Delivery	90 days	Tue 10/8/21	Sun 7/11/21																					
221	Waterpipe (Supply and Test)	300 days	Wed 28/4/21	Mon 21/2/22																					
222	Batch 1	60 days	Wed 28/4/21	Sat 26/6/21																					
223	Batch 2	120 days	Sun 27/6/21	Sun 24/10/21																					
224	Batch 3	120 days	Mon 25/10/21	Mon 21/2/22																					
225	Drainage Pipe (Supply and Test)	300 days	Wed 28/4/21	Mon 21/2/22																					
226	Batch 1	80 days	Wed 28/4/21	Fri 16/7/21																					
227	Batch 2	100 days	Sat 17/7/21	Sun 24/10/21																					
228	Batch 3	120 days	Mon 25/10/21	Mon 21/2/22																					
229	Sewerage Pipe (Supply and Test)	300 days	Wed 28/4/21	Mon 21/2/22																					
230	Batch 1	80 days	Wed 28/4/21	Fri 16/7/21																					
231	Batch 2	100 days	Sat 17/7/21	Sun 24/10/21																					
232	Batch 3	120 days	Mon 25/10/21	Mon 21/2/22																					
233	E&M Materials	60 days	Wed 28/4/21	Sat 26/6/21																					
234	Fabrication and Delivery	60 days	Wed 28/4/21	Sat 26/6/21																					
235	Roading Lighting Materials	60 days	Wed 28/4/21	Sat 26/6/21																					
236	Fabrication and Delivery	60 days	Wed 28/4/21	Sat 26/6/21																					
237	Design and Method of Works	578 days	Tue 20/4/21	Fri 18/11/22																					
238	Permanent Works Design	499 days	Thu 10/6/21	Fri 21/10/22																					
239	Natural Terrain Hazard Study	214 days	Sat 28/8/21	Tue 29/3/22																					
240	Submission of the Detailed Boulder Survey Report with the Boulder Hazard Mitigation Measures	154 days	Sat 28/8/21	Fri 28/1/22																					
241	Approval from GEO	60 days	Sat 29/1/22	Tue 29/3/22																					
242	Sewage Pumping Station	201 days	Sat 8/1/22	Wed 27/7/22																					
243	Prepare and Submit Design	120 days	Sat 8/1/22	Sat 7/5/22																					
244	ICE Certification, Approval and Consent	21 days	Sun 8/5/22	Sat 28/5/22																					
245	Approval from DSD	60 days	Sun 29/5/22	Wed 27/7/22																					
246	Transformer Room	141 days	Thu 10/6/21	Thu 28/10/21																					
247	Prepare and Submit Design	60 days	Thu 10/6/21	Sun 8/8/21																					
248	ICE Certification, Approval and Consent	21 days	Mon 9/8/21	Sun 29/8/21																					
249	Approval from CLP	60 days	Mon 30/8/21	Thu 28/10/21																					
250	Road Lighting System for Road D1 and L51	175 days	Sat 29/1/22	Fri 22/7/22																					
251	Prepare and Submit Design	70 days	Sat 29/1/22	Fri 8/4/22																					
252	ICE Certification, Approval and Consent	21 days	Sat 9/4/22	Fri 29/4/22																					
253	Approval from HyD Lighting Division	84 days	Sat 30/4/22	Fri 22/7/22																					
254	Road Lighting System for Road L53 and L54	175 days	Sat 30/4/22	Fri 21/10/22																					
255	Prepare and Submit Design	70 days	Sat 30/4/22	Fri 8/7/22																					
256	ICE Certification, Approval and Consent	21 days	Sat 9/7/22	Fri 29/7/22																					
257	Approval from HyD Lighting Division	84 days	Sat 30/7/22	Fri 21/10/22																					
258	Temporary Works Design	539 days	Tue 20/4/21	Mon 10/10/22																					
259	Site Establishment	112 days	Tue 20/4/21	Mon 9/8/21																					
260	PM's Accomodation	40 days	Thu 1/7/21	Mon 9/8/21																					
261	Prepare and Submit Design	20 days	Thu 1/7/21	Tue 20/7/21																					
262	ICE certification, approval and Consent	20 days	Wed 21/7/21	Mon 9/8/21																					
263	Site facilities (Hoarding, Project Signboard, Temporary Traffic Sign etc.)	32 days	Tue 20/4/21	Fri 21/5/21																					
264	Prepare and Submit Design	20 days	Tue 20/4/21	Sun 9/5/21																					
265	ICE Certification, Approval and Consent	12 days	Mon 10/5/21	Fri 21/5/21																					
266	Typical Excavation Shoring System for Trial Pit	30 days	Mon 10/5/21	Tue 8/6/21																					
267	Prepare and Submit Design	18 days	Mon 10/5/21	Thu 27/5/21																					
268	ICE Certification, Approval and Consent	12 days	Fri 28/5/21	Tue 8/6/21																					
269	Decontamination Works	425 days	Sat 1/5/21	Wed 29/6/22																					
270	Contamination Assessment Plan	332 days	Sat 1/5/21	Mon 28/3/22																					
271	Batch 1	44 days	Sat 1/5/21	Sun 13/6/21																					
272	Site Appraisal and Preparation of Plan	14 days	Sat 1/5/21	Fri 14/5/21																					

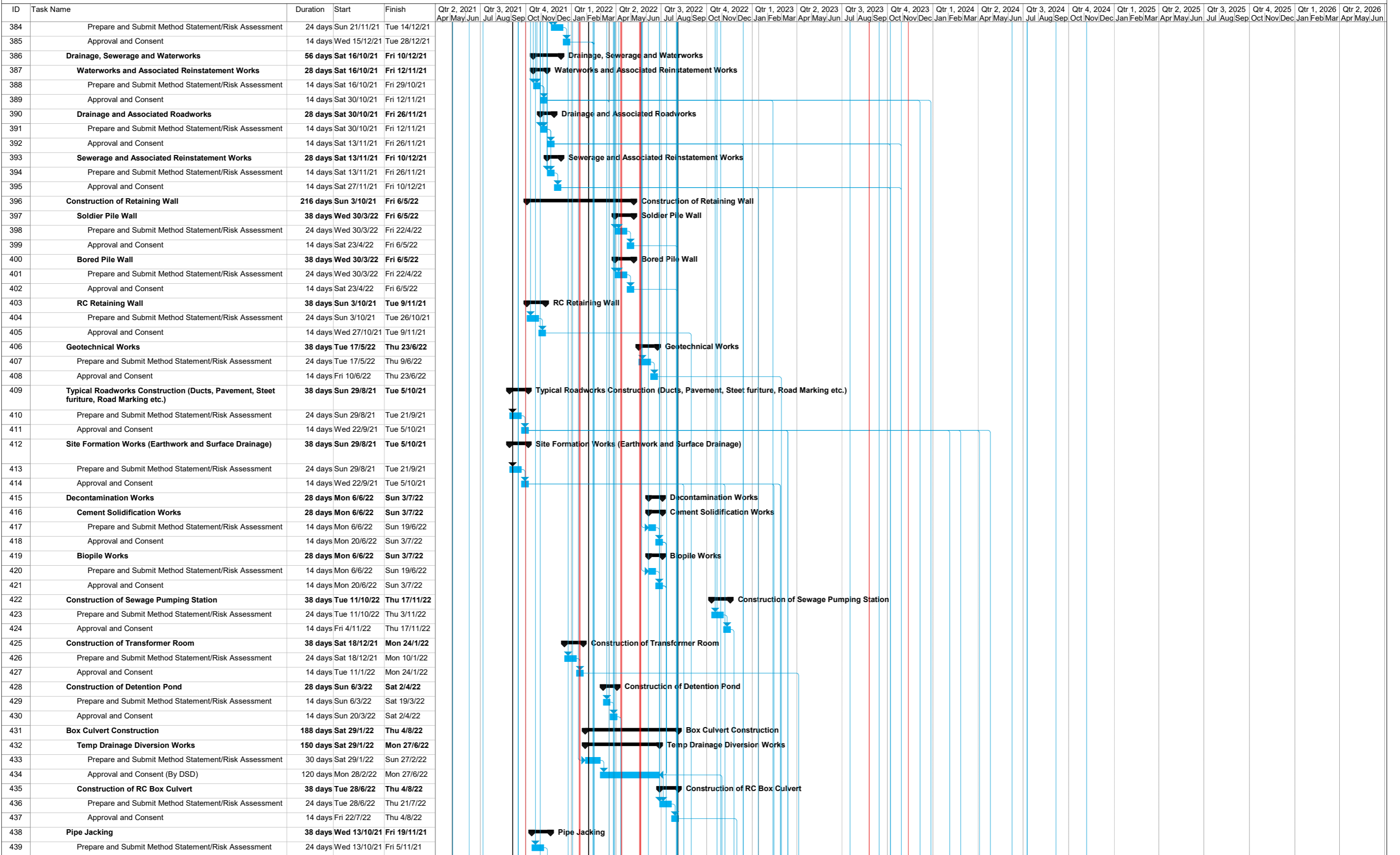
Task █ Critical Task █ Milestone ◆ Summary ▬

ID	Task Name	Duration	Start	Finish	Qtr 2, 2021	Qtr 3, 2021	Qtr 4, 2021	Qtr 1, 2022	Qtr 2, 2022	Qtr 3, 2022	Qtr 4, 2022	Qtr 1, 2023	Qtr 2, 2023	Qtr 3, 2023	Qtr 4, 2023	Qtr 1, 2024	Qtr 2, 2024	Qtr 3, 2024	Qtr 4, 2024	Qtr 1, 2025	Qtr 2, 2025	Qtr 3, 2025	Qtr 4, 2025	Qtr 1, 2026	Qtr 2, 2026
273	Submission and Endorsement by EPD	30 days	Sat 15/5/21	Sun 13/6/21																					
274	Batch 2	55 days	Mon 31/1/22	Sat 26/3/22																					
275	Site Appraisal and Preparation of Plan	25 days	Mon 31/1/22	Thu 24/2/22																					
276	Submission and Endorsement by EPD	30 days	Fri 25/2/22	Sat 26/3/22																					
277	Batch 3	55 days	Wed 2/2/22	Mon 28/3/22																					
278	Site Appraisal and Preparation of Plan	25 days	Wed 2/2/22	Sat 26/2/22																					
279	Submission and Endorsement by EPD	30 days	Sun 27/2/22	Mon 28/3/22																					
280	Cement Solidification System	48 days	Fri 13/5/22	Wed 29/6/22																					
281	Prepare and Submit Design	24 days	Fri 13/5/22	Sun 5/6/22																					
282	ICE Certification, Approval and Consent	24 days	Mon 6/6/22	Wed 29/6/22																					
283	Biopile System	48 days	Fri 13/5/22	Wed 29/6/22																					
284	Prepare and Submit Design	24 days	Fri 13/5/22	Sun 5/6/22																					
285	ICE Certification, Approval and Consent	24 days	Mon 6/6/22	Wed 29/6/22																					
286	Demolition Works	84 days	Sun 29/8/21	Sat 20/11/21																					
287	Demolition of RC Structures less than 2-storey	48 days	Sun 29/8/21	Fri 15/10/21																					
288	Prepare and Submit Design	24 days	Sun 29/8/21	Tue 21/9/21																					
289	ICE Certification, Approval and Consent	24 days	Wed 22/9/21	Fri 15/10/21																					
290	Demolition of Steel Frame Structures	60 days	Wed 22/9/21	Sat 20/11/21																					
291	Prepare and Submit Design	36 days	Wed 22/9/21	Wed 27/10/21																					
292	ICE Certification, Approval and Consent	24 days	Thu 28/10/21	Sat 20/11/21																					
293	Drainage, Sewerage and Water Works	60 days	Sun 29/8/21	Wed 27/10/21																					
294	ELS Design (By Shoring Method)	36 days	Sun 29/8/21	Sun 3/10/21																					
295	Prepare and Submit Design	12 days	Sun 29/8/21	Thu 9/9/21																					
296	ICE Certification, Approval and Consent	24 days	Fri 10/9/21	Sun 3/10/21																					
297	Temporary Utility Support	36 days	Fri 10/9/21	Fri 15/10/21																					
298	Prepare and Submit Design	12 days	Fri 10/9/21	Tue 21/9/21																					
299	ICE Certification, Approval and Consent	24 days	Wed 22/9/21	Fri 15/10/21																					
300	Formwork Design for Manhole Construction	36 days	Wed 22/9/21	Wed 27/10/21																					
301	Prepare and Submit Design	12 days	Wed 22/9/21	Sun 3/10/21																					
302	ICE Certification, Approval and Consent	24 days	Mon 4/10/21	Wed 27/10/21																					
303	Geotechnical Works	48 days	Wed 30/3/22	Mon 16/5/22																					
304	Working Platform	36 days	Wed 30/3/22	Wed 4/5/22																					
305	Prepare and Submit Design	12 days	Wed 30/3/22	Sun 10/4/22																					
306	ICE Certification, Approval and Consent	24 days	Mon 11/4/22	Wed 4/5/22																					
307	Formwork Design for RC Structures	36 days	Mon 11/4/22	Mon 16/5/22																					
308	Prepare and Submit Design	12 days	Mon 11/4/22	Fri 22/4/22																					
309	ICE Certification, Approval and Consent	24 days	Mon 11/4/22	Mon 16/5/22																					
310	Pipe Jacking	60 days	Sat 14/8/21	Tue 12/10/21																					
311	ELS Design (By Shoring Method)	60 days	Sat 14/8/21	Tue 12/10/21																					
312	Prepare and Submit Design	30 days	Sat 14/8/21	Sun 12/9/21																					
313	ICE Certification, Approval and Consent	30 days	Mon 13/9/21	Tue 12/10/21																					
314	Retaining Wall	214 days	Sat 28/8/21	Tue 29/3/22																					
315	Formwork Design for Lagging Wall Construction (Soldier Pile Wall)	36 days	Sat 29/1/22	Sat 5/3/22																					
316	Prepare and Submit Design	12 days	Sat 29/1/22	Wed 9/2/22																					
317	ICE Certification, Approval and Consent	24 days	Thu 10/2/22	Sat 5/3/22																					
318	Formwork Design for Lagging Wall Construction (Bored Pile Wall)	36 days	Thu 10/2/22	Thu 17/3/22																					
319	Prepare and Submit Design	12 days	Thu 10/2/22	Mon 21/2/22																					
320	ICE Certification, Approval and Consent	24 days	Tue 22/2/22	Thu 17/3/22																					
321	Formwork Design for RC Capping Beam Construction	36 days	Tue 22/2/22	Tue 29/3/22																					
322	Prepare and Submit Design	12 days	Tue 22/2/22	Sat 5/3/22																					
323	ICE Certification, Approval and Consent	24 days	Sun 6/3/22	Tue 29/3/22																					
324	Formwork Design for RC Retaining Wall Construction	36 days	Sat 28/8/21	Sat 2/10/21																					
325	Prepare and Submit Design	12 days	Sat 28/8/21	Wed 8/9/21																					
326	ICE Certification, Approval and Consent	24 days	Thu 9/9/21	Sat 2/10/21																					
327	Detention Pond	36 days	Sat 29/1/22	Sat 5/3/22																					

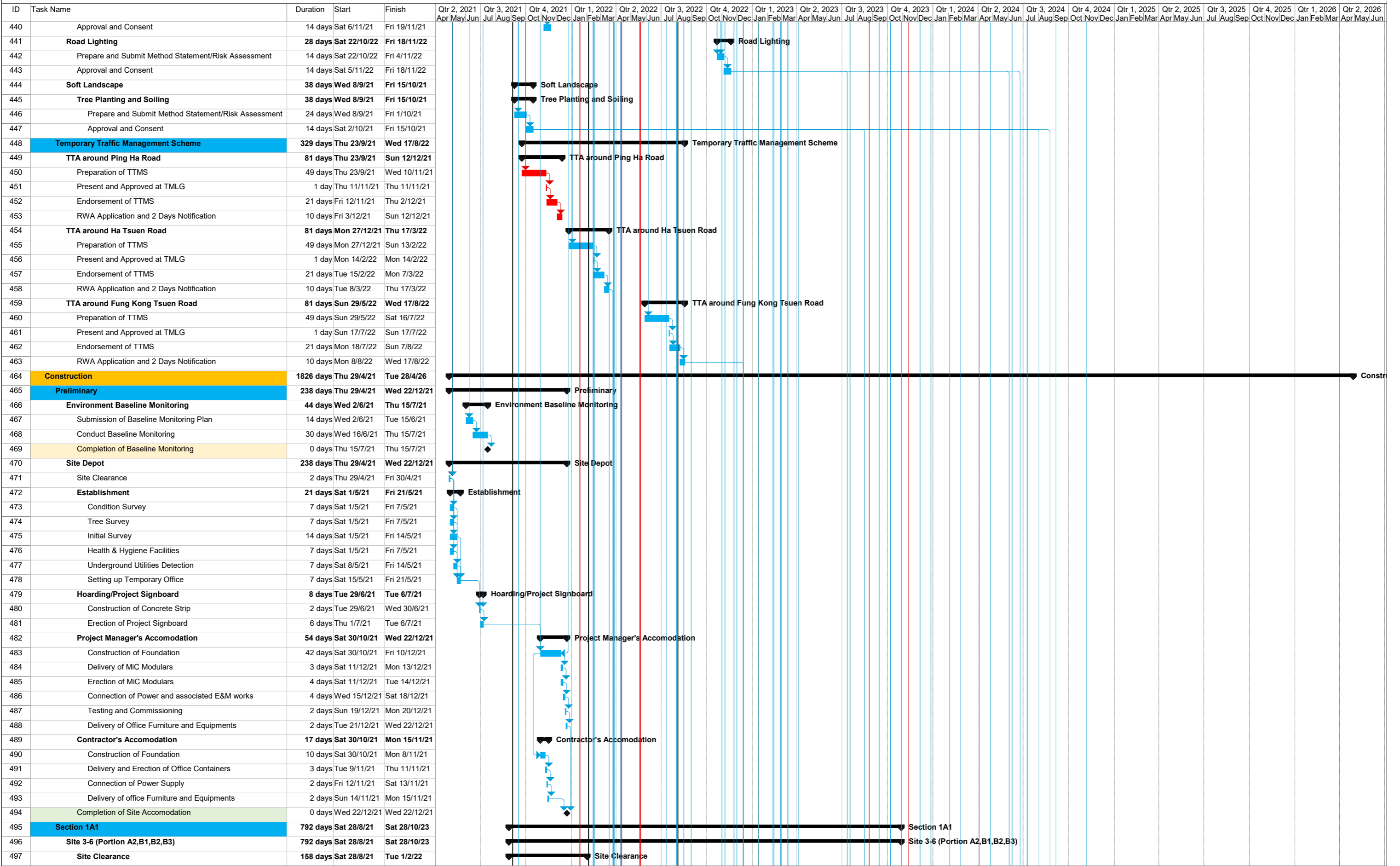
Task Critical Task Milestone Summary



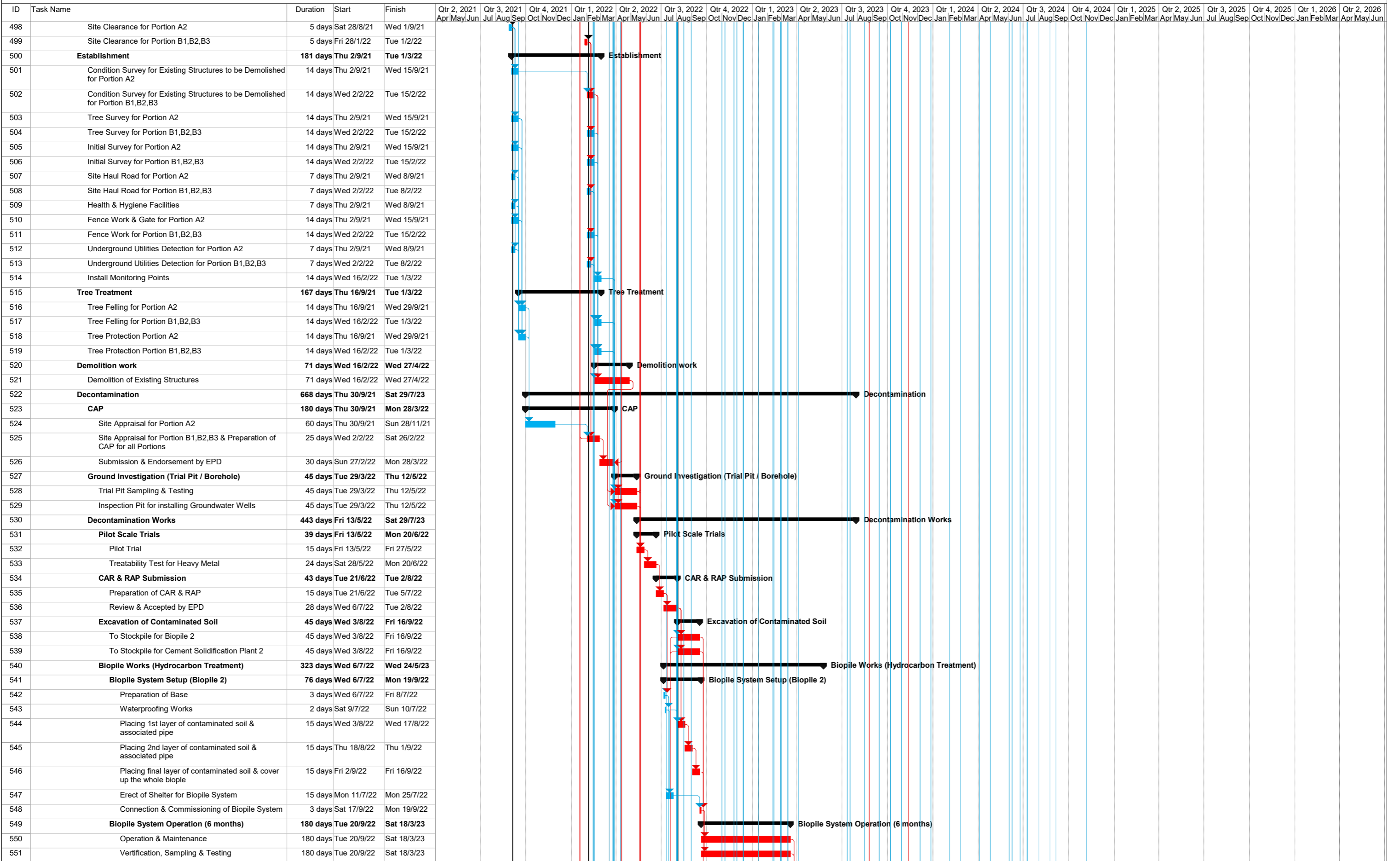
Task █ Critical Task █ Milestone ◆ Summary ▬



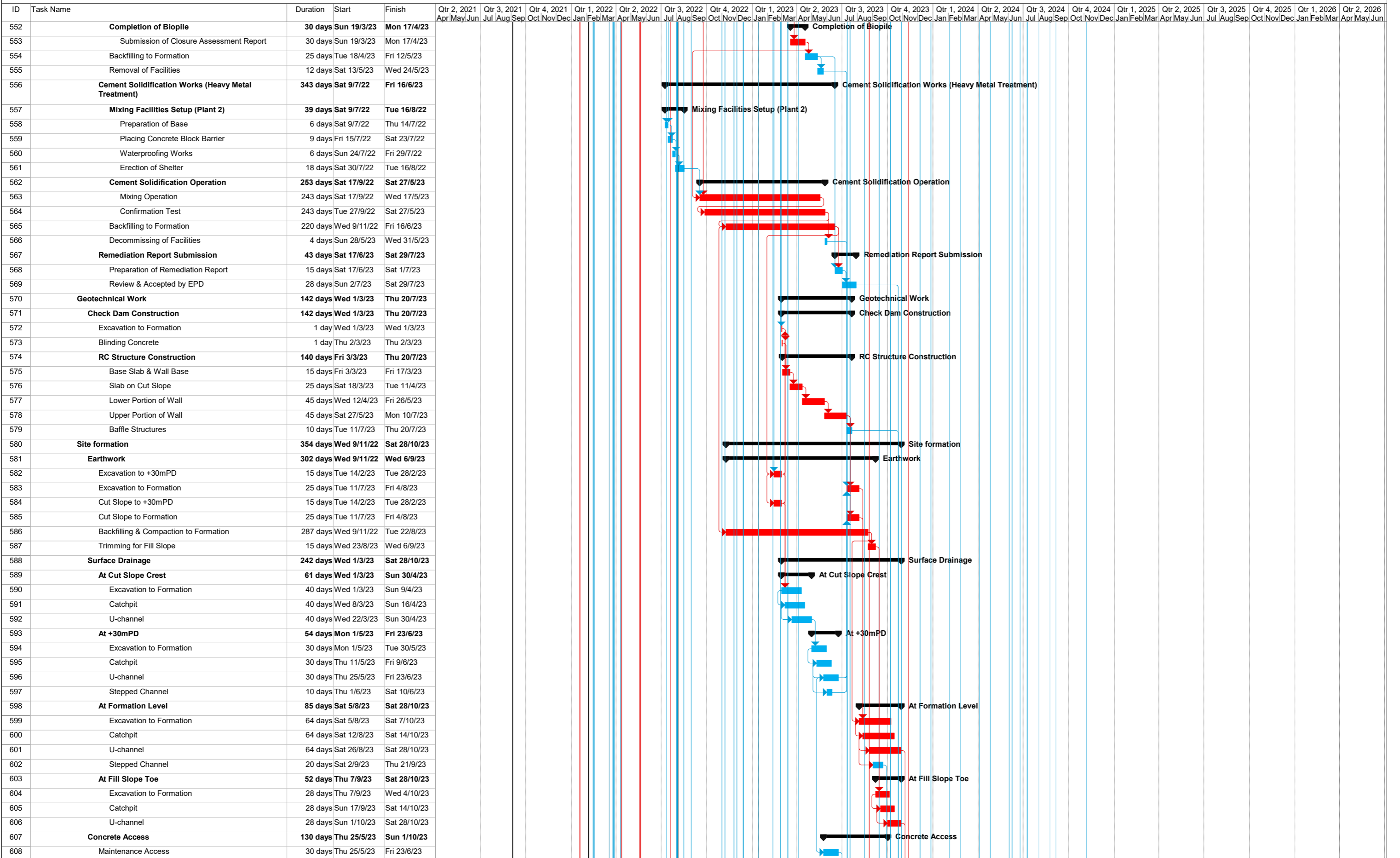
Task █ Critical Task █ Milestone ◆ Summary ▬



Task █ Critical Task █ Milestone ◆ Summary ▬



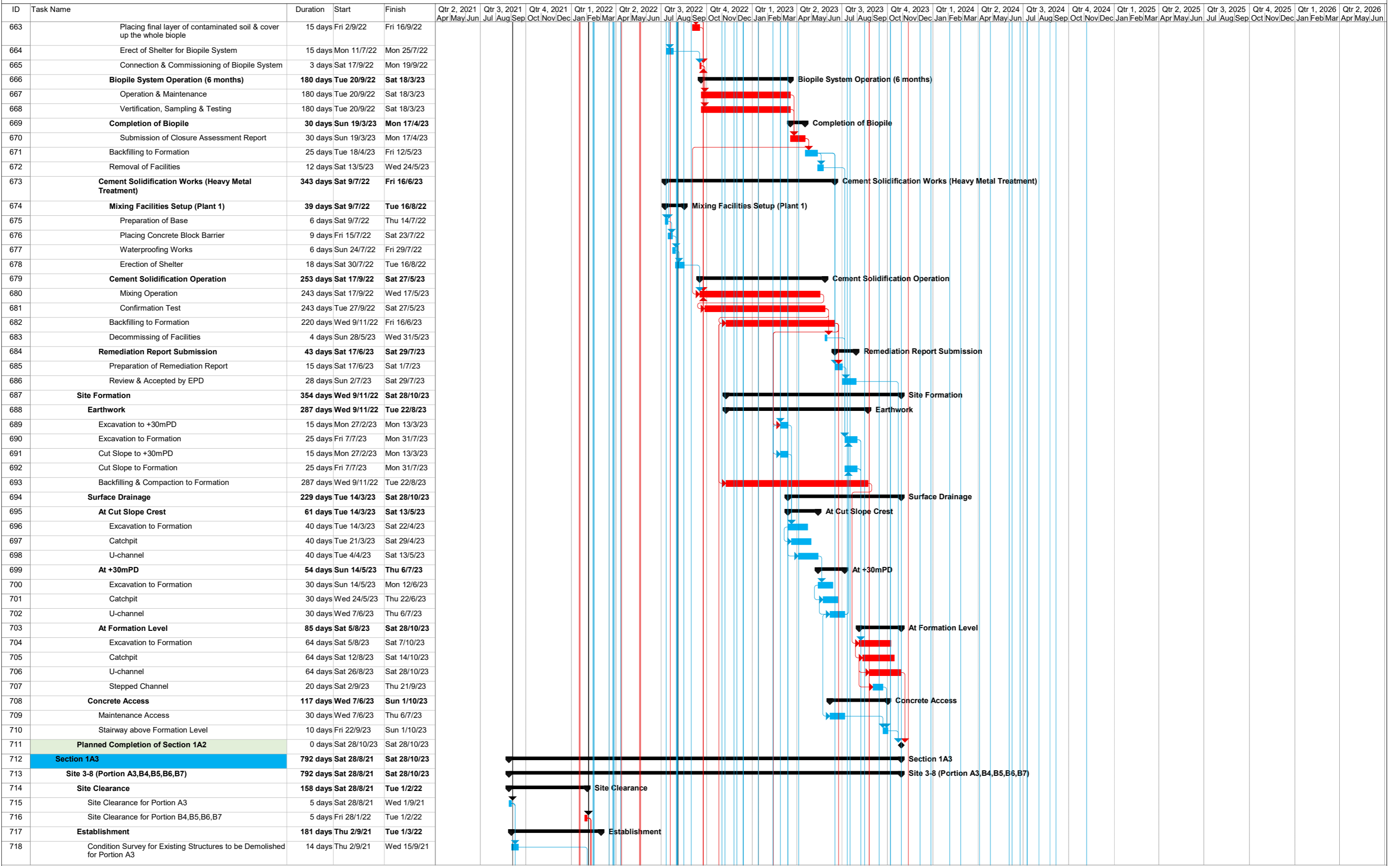
Task █ Critical Task █ Milestone ◆ Summary ▬



Task █ Critical Task █ Milestone ◆ Summary ▬

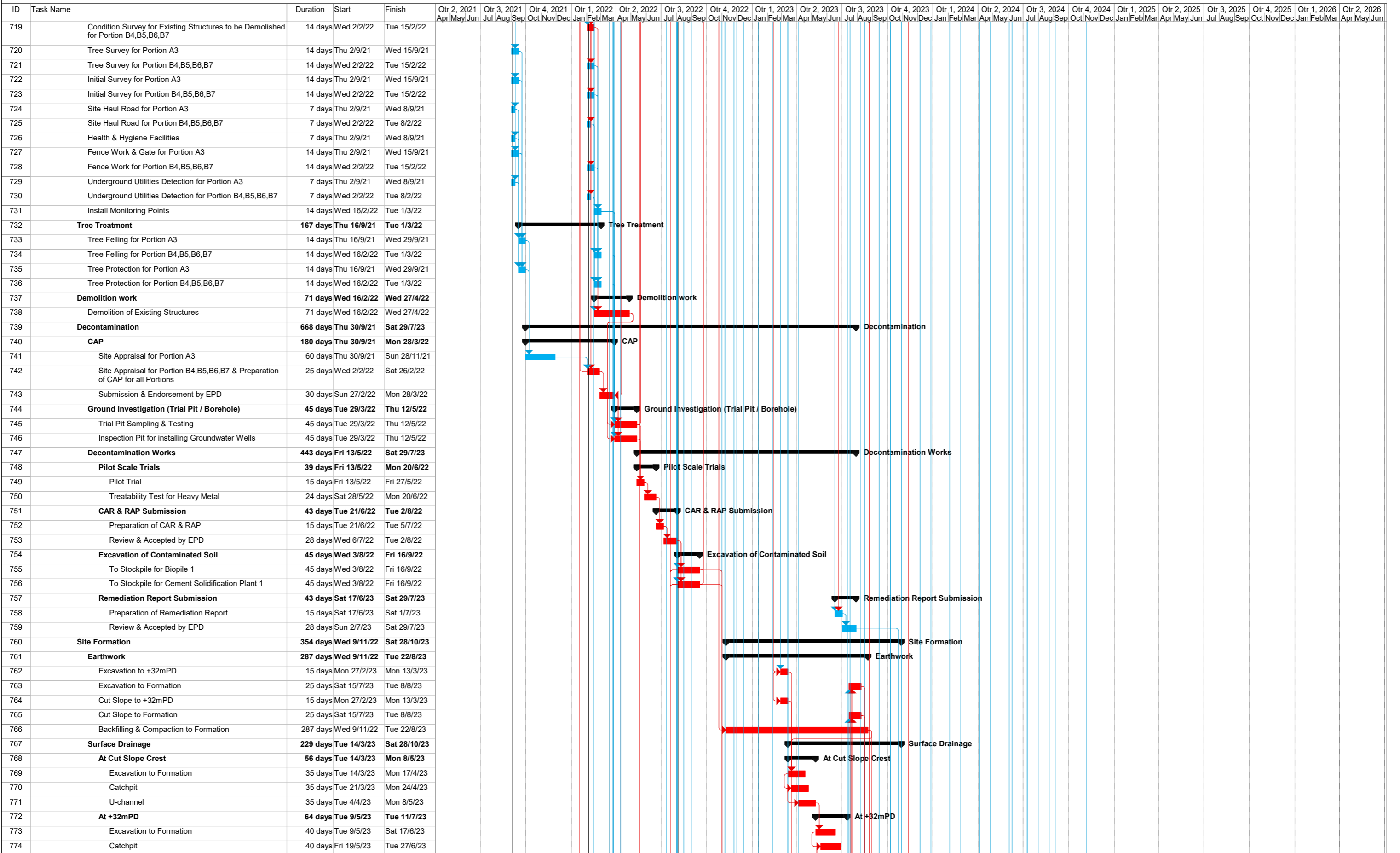
ID	Task Name	Duration	Start	Finish	Qtr 2, 2021 Apr/May/Jun	Qtr 3, 2021 Jul/Aug/Sep	Qtr 4, 2021 Oct/Nov/Dec	Qtr 1, 2022 Jan/Feb/Mar	Qtr 2, 2022 Apr/May/Jun	Qtr 3, 2022 Jul/Aug/Sep	Qtr 4, 2022 Oct/Nov/Dec	Qtr 1, 2023 Jan/Feb/Mar	Qtr 2, 2023 Apr/May/Jun	Qtr 3, 2023 Jul/Aug/Sep	Qtr 4, 2023 Oct/Nov/Dec	Qtr 1, 2024 Jan/Feb/Mar	Qtr 2, 2024 Apr/May/Jun	Qtr 3, 2024 Jul/Aug/Sep	Qtr 4, 2024 Oct/Nov/Dec	Qtr 1, 2025 Jan/Feb/Mar	Qtr 2, 2025 Apr/May/Jun	Qtr 3, 2025 Jul/Aug/Sep	Qtr 4, 2025 Oct/Nov/Dec	Qtr 1, 2026 Jan/Feb/Mar	Qtr 2, 2026 Apr/May/Jun
609	Stairway above +30mPD	10 days	Sat 24/6/23	Mon 3/7/23																					
610	Stairway above Formation Level	10 days	Fri 22/9/23	Sun 1/10/23																					
611	Planned Completion of Section 1A1	0 days	Sat 28/10/23	Sat 28/10/23																					
612	Section 1A2	792 days	Sat 28/8/21	Sat 28/10/23																					
613	Site 3-7 (Portion A2,B2,B3,B5)	792 days	Sat 28/8/21	Sat 28/10/23																					
614	Site Clearance	158 days	Sat 28/8/21	Tue 1/2/22																					
615	Site Clearance for Portion A2	5 days	Sat 28/8/21	Wed 1/9/21																					
616	Site Clearance for Portion B2,B3,B5	5 days	Fri 28/1/22	Tue 1/2/22																					
617	Establishment	181 days	Thu 2/9/21	Tue 1/3/22																					
618	Condition Survey for Existing Structures to be Demolished for Portion A2	14 days	Thu 2/9/21	Wed 15/9/21																					
619	Condition Survey for Existing Structures to be Demolished for Portion B2,B3,B5	14 days	Wed 2/2/22	Tue 15/2/22																					
620	Tree Survey for Portion A2	14 days	Thu 2/9/21	Wed 15/9/21																					
621	Tree Survey for Portion B2,B3,B5	14 days	Wed 2/2/22	Tue 15/2/22																					
622	Initial Survey for Portion A2	14 days	Thu 2/9/21	Wed 15/9/21																					
623	Initial Survey for Portion B2,B3,B5	14 days	Wed 2/2/22	Tue 15/2/22																					
624	Site Haul Road for Portion A2	7 days	Thu 2/9/21	Wed 8/9/21																					
625	Site Haul Road for Portion B2,B3,B5	7 days	Wed 2/2/22	Tue 8/2/22																					
626	Health & Hygiene Facilities	7 days	Thu 2/9/21	Wed 8/9/21																					
627	Fence Work & Gate for Portion A2	14 days	Thu 2/9/21	Wed 15/9/21																					
628	Fence Work for Portion B2,B3,B5	14 days	Wed 2/2/22	Tue 15/2/22																					
629	Underground Utilities Detection for Portion A2	7 days	Thu 2/9/21	Wed 8/9/21																					
630	Underground Utilities Detection for Portion B2,B3,B5	7 days	Wed 2/2/22	Tue 8/2/22																					
631	Install Monitoring Points	14 days	Wed 16/2/22	Tue 1/3/22																					
632	Tree Treatment	167 days	Thu 16/9/21	Tue 1/3/22																					
633	Tree Felling for Portion A2	14 days	Thu 16/9/21	Wed 29/9/21																					
634	Tree Felling for Portion B2,B3,B5	14 days	Wed 16/2/22	Tue 1/3/22																					
635	Tree Protection Portion A2	14 days	Thu 16/9/21	Wed 29/9/21																					
636	Tree Protection Portion B2,B3,B5	14 days	Wed 16/2/22	Tue 1/3/22																					
637	Demolition work	71 days	Wed 16/2/22	Wed 27/4/22																					
638	Demolition of Existing Structures	71 days	Wed 16/2/22	Wed 27/4/22																					
639	Decontamination	668 days	Thu 30/9/21	Sat 29/7/23																					
640	CAP	180 days	Thu 30/9/21	Mon 28/3/22																					
641	Site Appraisal for Portion A2	60 days	Thu 30/9/21	Sun 28/11/21																					
642	Site Appraisal for Portion B2,B3,B5 & Preparation of CAP for all Portions	25 days	Wed 2/2/22	Sat 26/2/22																					
643	Submission & Endorsement by EPD	30 days	Sun 27/2/22	Mon 28/3/22																					
644	Ground Investigation (Trial Pit / Borehole)	45 days	Tue 29/3/22	Thu 12/5/22																					
645	Trial Pit Sampling & Testing	45 days	Tue 29/3/22	Thu 12/5/22																					
646	Inspection Pit for installing Groundwater Wells	45 days	Tue 29/3/22	Thu 12/5/22																					
647	Decontamination Works	443 days	Fri 13/5/22	Sat 29/7/23																					
648	Pilot Scale Trials	39 days	Fri 13/5/22	Mon 20/6/22																					
649	Pilot Trial	15 days	Fri 13/5/22	Fri 27/5/22																					
650	Treatability Test for Heavy Metal	24 days	Sat 28/5/22	Mon 20/6/22																					
651	CAR & RAP Submission	43 days	Tue 21/6/22	Tue 2/8/22																					
652	Preparation of CAR & RAP	15 days	Tue 21/6/22	Tue 5/7/22																					
653	Review & Accepted by EPD	28 days	Wed 6/7/22	Tue 2/8/22																					
654	Excavation of Contaminated Soil	45 days	Wed 3/8/22	Fri 16/9/22																					
655	To Stockpile for Biopile 1	45 days	Wed 3/8/22	Fri 16/9/22																					
656	To Stockpile for Cement Solidification Plant 1	45 days	Wed 3/8/22	Fri 16/9/22																					
657	Biopile Works (Hydrocarbon Treatment)	323 days	Wed 6/7/22	Wed 24/5/23																					
658	Biopile System Setup (Biopile 1)	76 days	Wed 6/7/22	Mon 19/9/22																					
659	Preparation of Base	3 days	Wed 6/7/22	Fri 8/7/22																					
660	Waterproofing Works	2 days	Sat 9/7/22	Sun 10/7/22																					
661	Placing 1st layer of contaminated soil & associated pipe	15 days	Wed 3/8/22	Wed 17/8/22																					
662	Placing 2nd layer of contaminated soil & associated pipe	15 days	Thu 18/8/22	Thu 1/9/22																					

Task ■ Critical Task ■ Milestone ◆ Summary ▬



Task ■ Critical Task ■ Milestone ◆ Summary ▬

Hung Shui Kiu/Ha Tsuen New Development Area Stage 1 Works -
Site Formation and Engineering Infrastructure



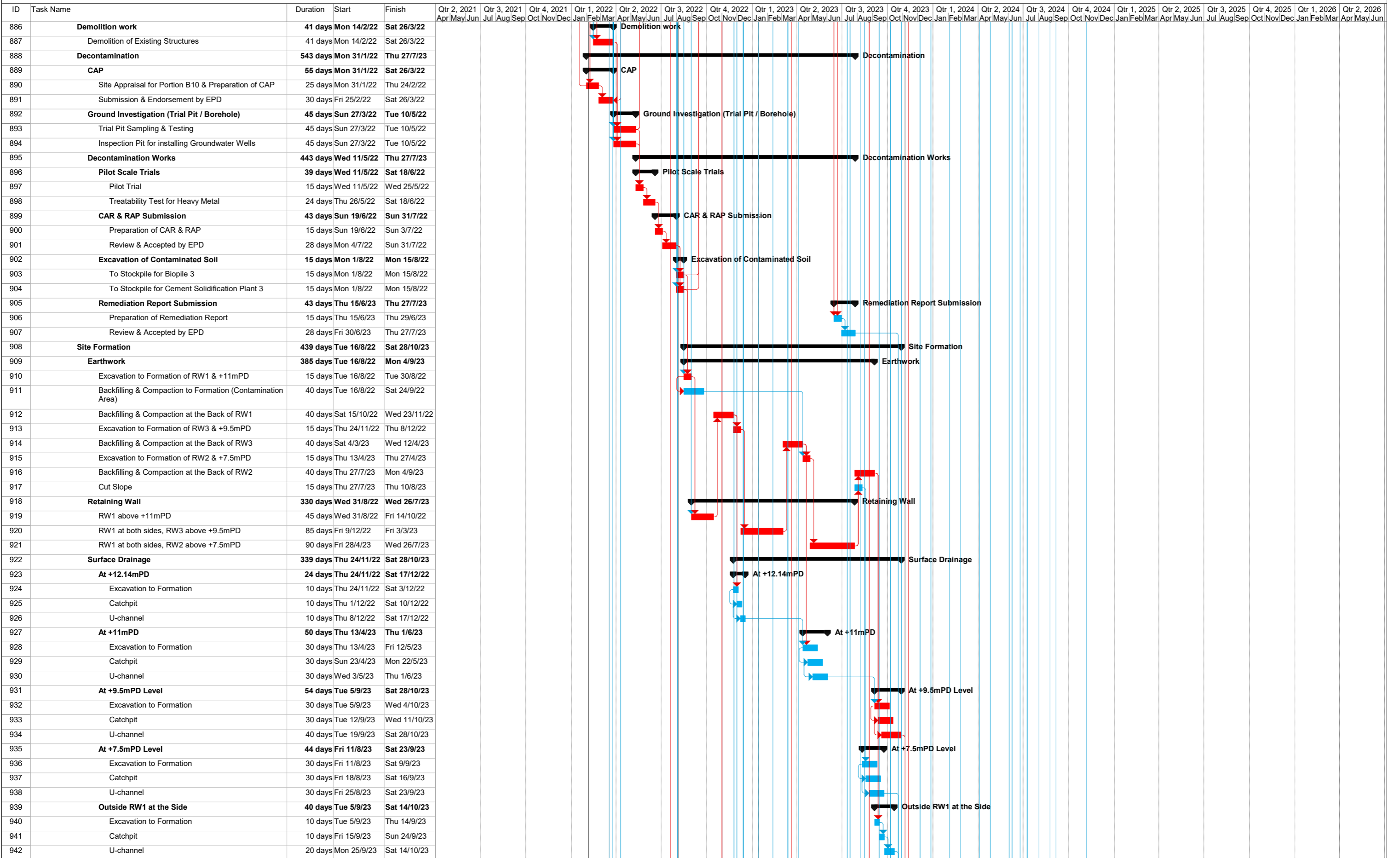
Task █ Critical Task █ Milestone ◆ Summary ▬

ID	Task Name	Duration	Start	Finish	Qtr 2, 2021 Apr/May/June	Qtr 3, 2021 Jul/Aug/Sept	Qtr 4, 2021 Oct/Nov/Dec	Qtr 1, 2022 Jan/Feb/Mar	Qtr 2, 2022 Apr/May/June	Qtr 3, 2022 Jul/Aug/Sept	Qtr 4, 2022 Oct/Nov/Dec	Qtr 1, 2023 Jan/Feb/Mar	Qtr 2, 2023 Apr/May/June	Qtr 3, 2023 Jul/Aug/Sept	Qtr 4, 2023 Oct/Nov/Dec	Qtr 1, 2024 Jan/Feb/Mar	Qtr 2, 2024 Apr/May/June	Qtr 3, 2024 Jul/Aug/Sept	Qtr 4, 2024 Oct/Nov/Dec	Qtr 1, 2025 Jan/Feb/Mar	Qtr 2, 2025 Apr/May/June	Qtr 3, 2025 Jul/Aug/Sept	Qtr 4, 2025 Oct/Nov/Dec	Qtr 1, 2026 Jan/Feb/Mar	Qtr 2, 2026 Apr/May/June	
775	U-channel	40 days	Fri 2/6/23	Tue 11/7/23																						
776	Stepped Channel	10 days	Fri 9/6/23	Sun 18/6/23																						
777	At Formation Level	81 days	Wed 9/8/23	Sat 28/10/23																						
778	Excavation to Formation	60 days	Wed 9/8/23	Sat 7/10/23																						
779	Catchpit	60 days	Wed 16/8/23	Sat 14/10/23																						
780	U-channel	60 days	Wed 30/8/23	Sat 28/10/23																						
781	Stepped Channel	20 days	Wed 6/9/23	Mon 25/9/23																						
782	Concrete Access	136 days	Fri 2/6/23	Sun 15/10/23																						
783	Maintenance Access	40 days	Fri 2/6/23	Tue 11/7/23																						
784	Stairway above +32mPD	3 days	Wed 12/7/23	Fri 14/7/23																						
785	Stairway above Formation Level	20 days	Tue 26/9/23	Sun 15/10/23																						
786	Planned Completion of Section 1A3	0 days	Sat 28/10/23	Sat 28/10/23																						
787	Section 1A4	639 days	Fri 28/1/22	Sat 28/10/23																						
788	Site 2-18 (Portion B11)	639 days	Fri 28/1/22	Sat 28/10/23																						
789	Site Clearance	3 days	Fri 28/1/22	Sun 30/1/22																						
790	Establishment	14 days	Mon 31/1/22	Sun 13/2/22																						
791	Condition Survey for Existing Structures to be Demolished	14 days	Mon 31/1/22	Sun 13/2/22																						
792	Tree Survey	14 days	Mon 31/1/22	Sun 13/2/22																						
793	Initial Survey	14 days	Mon 31/1/22	Sun 13/2/22																						
794	Site Haul Road	7 days	Mon 31/1/22	Sun 6/2/22																						
795	Health & Hygiene Facilities	7 days	Mon 31/1/22	Sun 6/2/22																						
796	Fence Work	14 days	Mon 31/1/22	Sun 13/2/22																						
797	Underground Utilities Detection	7 days	Mon 31/1/22	Sun 6/2/22																						
798	Install Monitoring Points	14 days	Mon 31/1/22	Sun 13/2/22																						
799	Tree Treatment	14 days	Mon 14/2/22	Sun 27/2/22																						
800	Tree Felling	14 days	Mon 14/2/22	Sun 27/2/22																						
801	Tree Protection	14 days	Mon 14/2/22	Sun 27/2/22																						
802	Demolition work	41 days	Mon 14/2/22	Sat 26/3/22																						
803	Demolition of Existing Structures	41 days	Mon 14/2/22	Sat 26/3/22																						
804	Decontamination	543 days	Mon 31/1/22	Thu 27/7/23																						
805	CAP	55 days	Mon 31/1/22	Sat 26/3/22																						
806	Site Appraisal & Preparation of CAP	25 days	Mon 31/1/22	Thu 24/2/22																						
807	Submission & Endorsement by EPD	30 days	Fri 25/2/22	Sat 26/3/22																						
808	Ground Investigation (Trial Pit / Borehole)	45 days	Sun 27/3/22	Tue 10/5/22																						
809	Trial Pit Sampling & Testing	45 days	Sun 27/3/22	Tue 10/5/22																						
810	Inspection Pit for installing Groundwater Wells	45 days	Sun 27/3/22	Tue 10/5/22																						
811	Decontamination Works	443 days	Wed 11/5/22	Thu 27/7/23																						
812	Pilot Scale Trials	39 days	Wed 11/5/22	Sat 18/6/22																						
813	Pilot Trial	15 days	Wed 11/5/22	Wed 25/5/22																						
814	Treatability Test for Heavy Metal	24 days	Thu 26/5/22	Sat 18/6/22																						
815	CAR & RAP Submission	43 days	Sun 19/6/22	Sun 31/7/22																						
816	Preparation of CAR & RAP	15 days	Sun 19/6/22	Sun 3/7/22																						
817	Review & Accepted by EPD	28 days	Mon 4/7/22	Sun 31/7/22																						
818	Excavation of Contaminated Soil	45 days	Mon 1/8/22	Wed 14/9/22																						
819	To Stockpile for Biopile 3	45 days	Mon 1/8/22	Wed 14/9/22																						
820	To Stockpile for Cement Solidification Plant 3	45 days	Mon 1/8/22	Wed 14/9/22																						
821	Biopile Works (Hydrocarbon Treatment)	323 days	Mon 4/7/22	Mon 22/5/23																						
822	Biopile System Setup (Biopile 3)	76 days	Mon 4/7/22	Sat 17/9/22																						
823	Preparation of Base	3 days	Mon 4/7/22	Wed 6/7/22																						
824	Waterproofing Works	2 days	Thu 7/7/22	Fri 8/7/22																						
825	Placing 1st layer of contaminated soil & associated pipe	15 days	Mon 1/8/22	Mon 15/8/22																						
826	Placing 2nd layer of contaminated soil & associated pipe	15 days	Tue 16/8/22	Tue 30/8/22																						
827	Placing final layer of contaminated soil & cover up the whole biopile	15 days	Wed 31/8/22	Wed 14/9/22																						
828	Erect of Shelter for Biopile System	15 days	Sat 9/7/22	Sat 23/7/22																						
829	Connection & Commissioning of Biopile System	3 days	Thu 15/9/22	Sat 17/9/22																						

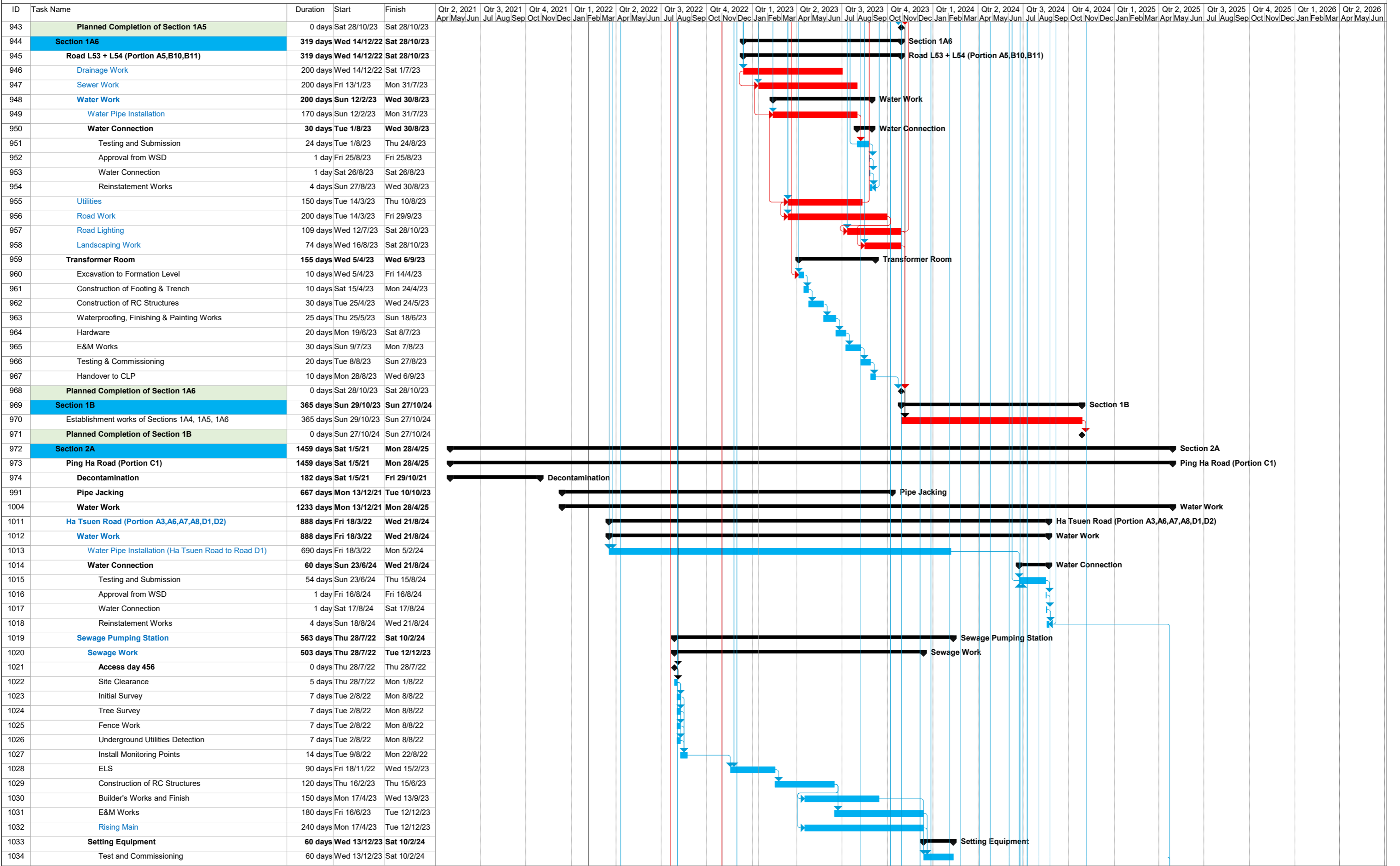
Task █ Critical Task █ Milestone ◆ Summary ▬

ID	Task Name	Duration	Start	Finish	Qtr 2, 2021 Apr May Jun	Qtr 3, 2021 Jul Aug Sep	Qtr 4, 2021 Oct Nov Dec	Qtr 1, 2022 Jan Feb Mar	Qtr 2, 2022 Apr May Jun	Qtr 3, 2022 Jul Aug Sep	Qtr 4, 2022 Oct Nov Dec	Qtr 1, 2023 Jan Feb Mar	Qtr 2, 2023 Apr May Jun	Qtr 3, 2023 Jul Aug Sep	Qtr 4, 2023 Oct Nov Dec	Qtr 1, 2024 Jan Feb Mar	Qtr 2, 2024 Apr May Jun	Qtr 3, 2024 Jul Aug Sep	Qtr 4, 2024 Oct Nov Dec	Qtr 1, 2025 Jan Feb Mar	Qtr 2, 2025 Apr May Jun	Qtr 3, 2025 Jul Aug Sep	Qtr 4, 2025 Oct Nov Dec	Qtr 1, 2026 Jan Feb Mar	Qtr 2, 2026 Apr May Jun
830	Biopile System Operation (6 months)	180 days	Sun 18/9/22	Thu 16/3/23																					
831	Operation & Maintenance	180 days	Sun 18/9/22	Thu 16/3/23																					
832	Verification, Sampling & Testing	180 days	Sun 18/9/22	Thu 16/3/23																					
833	Completion of Biopile	30 days	Fri 17/3/23	Sat 15/4/23																					
834	Submission of Closure Assessment Report	30 days	Fri 17/3/23	Sat 15/4/23																					
835	Backfilling to Formation	25 days	Sun 16/4/23	Wed 10/5/23																					
836	Removal of Facilities	12 days	Thu 11/5/23	Mon 22/5/23																					
837	Cement Solidification Works (Heavy Metal Treatment)	343 days	Thu 7/7/22	Wed 14/6/23																					
838	Mixing Facilities Setup (Plant 3)	39 days	Thu 7/7/22	Sun 14/8/22																					
839	Preparation of Base	6 days	Thu 7/7/22	Tue 12/7/22																					
840	Placing Concrete Block Barrier	9 days	Wed 13/7/22	Thu 21/7/22																					
841	Waterproofing Works	6 days	Fri 22/7/22	Wed 27/7/22																					
842	Erection of Shelter	18 days	Thu 28/7/22	Sun 14/8/22																					
843	Cement Solidification Operation	253 days	Thu 15/9/22	Thu 25/5/23																					
844	Mixing Operation	243 days	Thu 15/9/22	Mon 15/5/23																					
845	Confirmation Test	243 days	Sun 25/9/22	Thu 25/5/23																					
846	Backfilling to Formation	220 days	Mon 7/11/22	Wed 14/6/23																					
847	Decommissioning of Facilities	4 days	Fri 26/5/23	Mon 29/5/23																					
848	Remediation Report Submission	43 days	Thu 15/6/23	Thu 27/7/23																					
849	Preparation of Remediation Report	15 days	Thu 15/6/23	Thu 29/6/23																					
850	Review & Accepted by EPD	28 days	Fri 30/6/23	Thu 27/7/23																					
851	Site formation	356 days	Mon 7/11/22	Sat 28/10/23																					
852	Earthwork	305 days	Mon 7/11/22	Thu 7/9/23																					
853	Backfilling & Compaction to Formation	290 days	Mon 7/11/22	Wed 23/8/23																					
854	Trimming for Fill Slope	15 days	Thu 24/8/23	Thu 7/9/23																					
855	Surface Drainage	51 days	Fri 8/9/23	Sat 28/10/23																					
856	At Formation Level	51 days	Fri 8/9/23	Sat 28/10/23																					
857	Excavation to Formation	30 days	Fri 8/9/23	Sat 7/10/23																					
858	Catchpit	30 days	Fri 15/9/23	Sat 14/10/23																					
859	U-channel	30 days	Fri 29/9/23	Sat 28/10/23																					
860	Planned Completion of Section 1A4	0 days	Sat 28/10/23	Sat 28/10/23																					
861	Section 1A5	792 days	Sat 28/8/21	Sat 28/10/23																					
862	Site 2-19 (Portion A5,B10)	792 days	Sat 28/8/21	Sat 28/10/23																					
863	Site Clearance	156 days	Sat 28/8/21	Sun 30/1/22																					
864	Site Clearance for Portion A5	3 days	Sat 28/8/21	Mon 30/8/21																					
865	Site Clearance for Portion B10	3 days	Fri 28/1/22	Sun 30/1/22																					
866	Establishment	181 days	Tue 31/8/21	Sun 27/2/22																					
867	Condition Survey for Existing Structures to be Demolished for Portion A5	14 days	Tue 31/8/21	Mon 13/9/21																					
868	Condition Survey for Existing Structures to be Demolished for Portion B10	14 days	Mon 31/1/22	Sun 13/2/22																					
869	Tree Survey for Portion A5	14 days	Tue 31/8/21	Mon 13/9/21																					
870	Tree Survey for Portion B10	14 days	Mon 31/1/22	Sun 13/2/22																					
871	Initial Survey for Portion A5	14 days	Tue 31/8/21	Mon 13/9/21																					
872	Initial Survey for Portion B10	14 days	Mon 31/1/22	Sun 13/2/22																					
873	Site Haul Road for Portion A5	7 days	Tue 31/8/21	Mon 6/9/21																					
874	Site Haul Road for Portion B10	7 days	Mon 31/1/22	Sun 6/2/22																					
875	Health & Hygiene Facilities	7 days	Tue 31/8/21	Mon 6/9/21																					
876	Fence Work & Gate for Portion A5	14 days	Tue 31/8/21	Mon 13/9/21																					
877	Fence Work for Portion B10	14 days	Mon 31/1/22	Sun 13/2/22																					
878	Underground Utilities Detection for Portion A5	7 days	Tue 31/8/21	Mon 6/9/21																					
879	Underground Utilities Detection for Portion B10	7 days	Mon 31/1/22	Sun 6/2/22																					
880	Install Monitoring Points	14 days	Mon 14/2/22	Sun 27/2/22																					
881	Tree Treatment	167 days	Tue 14/9/21	Sun 27/2/22																					
882	Tree Felling for Portion A5	14 days	Tue 14/9/21	Mon 27/9/21																					
883	Tree Felling for Portion B10	14 days	Mon 14/2/22	Sun 27/2/22																					
884	Tree Protection for Portion A5	14 days	Tue 14/9/21	Mon 27/9/21																					
885	Tree Protection for Portion B10	14 days	Mon 14/2/22	Sun 27/2/22																					

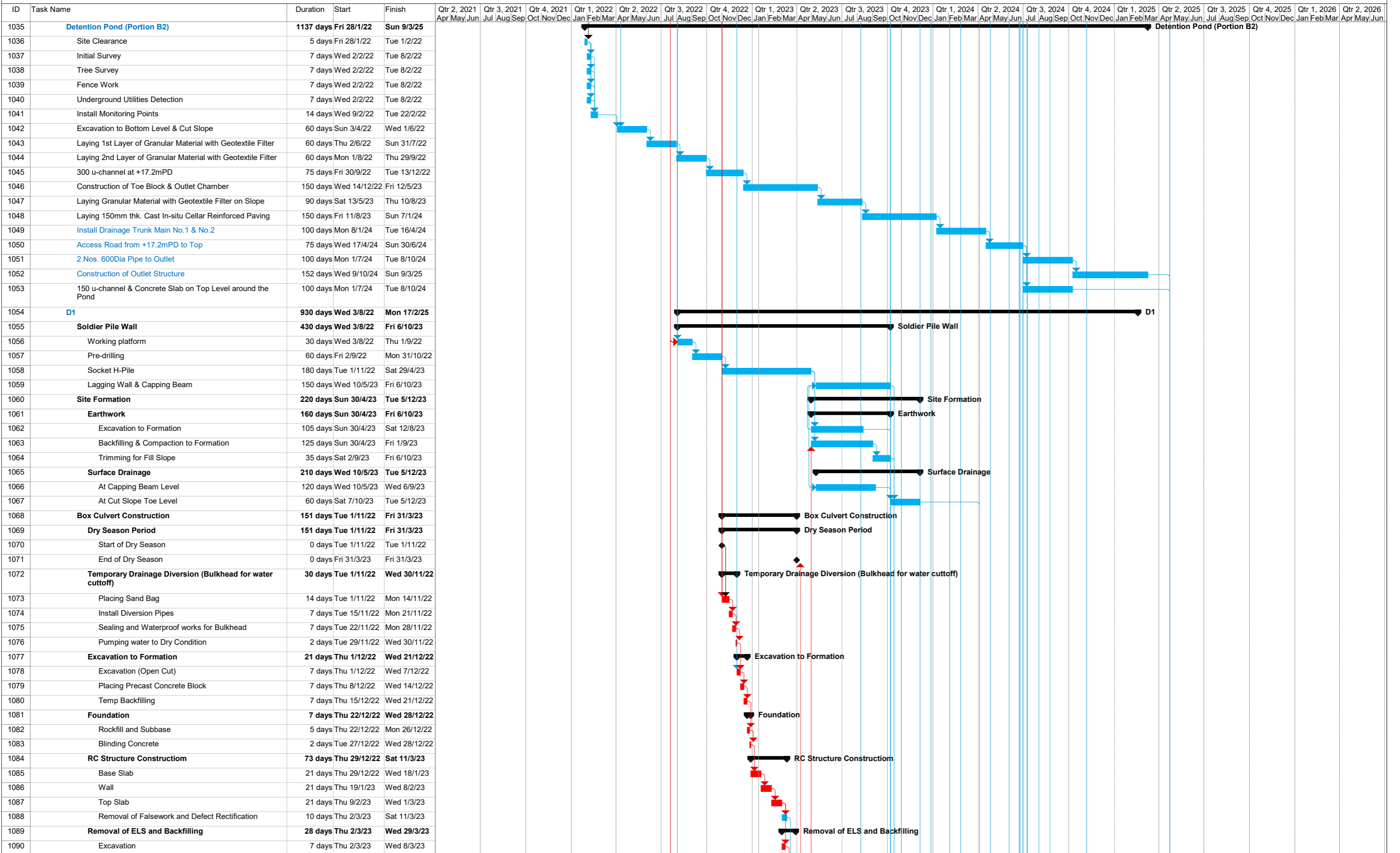
Task █ Critical Task █ Milestone ◆ Summary ▬



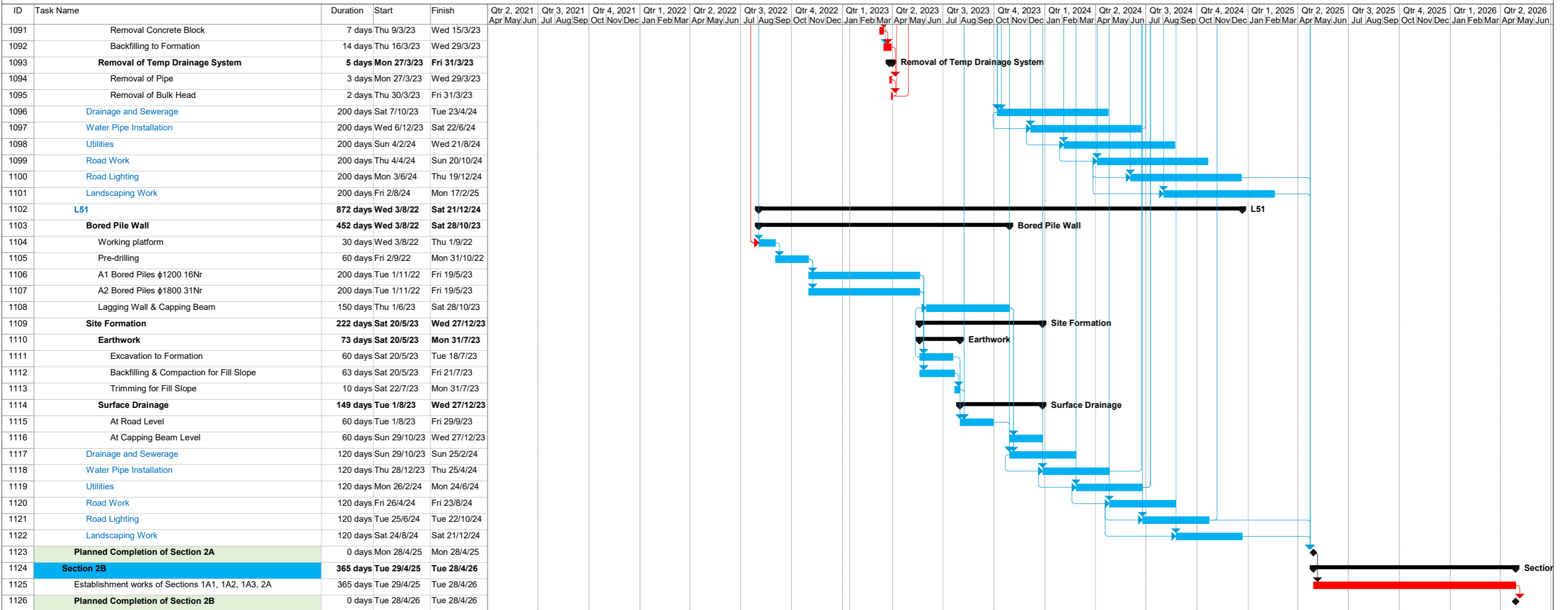
Task █ Critical Task █ Milestone ◆ Summary ▬



Task █ Critical Task █ Milestone ◆ Summary ▬



Task █ Critical Task █ Milestone ◆ Summary ▬



Task █ Critical Task █ Milestone ◆ Summary ▬