

Water Quality Monitoring Location : SW

Date	Start Time	Weather	Water depth (cm)	Temperature (°C)		pH		DO (mg/L)		DO (%)		Turbidity (NTU)		Suspended Solids (mg/L)	
				Value	Average	Value	Average	Value	Average	Value	Average	Value	Average	Value	Average
02 March 2024	15:36	Cloudy	7	22.3 22.3	22.3	8.2 8.2	8.2	6.9 7.0	6.9	79.6 80.2	79.9	2.4 2.4	2.4	3.6 3.8	3.7
05 March 2024	16:44	Cloudy	9	21.0 21.0	21.0	8.2 8.2	8.2	7.7 7.7	7.7	86.7 86.5	86.6	6.3 6.4	6.4	8.0 7.2	7.6
07 March 2024	17:13	Cloudy	8	21.1 21.2	21.2	8.2 8.2	8.2	7.8 7.7	7.7	87.4 86.9	87.2	5.5 4.6	5.1	1.2 1.9	1.6
09 March 2024	15:45	Cloudy	10	22.0 22.0	22.0	8.0 8.0	8.0	6.0 6.0	6.0	68.7 68.7	68.7	3.7 3.8	3.7	1.2 1.7	1.5
12 March 2024	14:45	Sunny	6	20.6 20.6	20.6	8.0 8.0	8.0	1.6 1.6	1.6	18.3 18.2	18.3	4.8 4.8	4.8	3.0 3.0	3.0
14 March 2024	14:24	Fine	6	20.8 20.8	20.8	8.0 8.0	8.0	2.4 2.3	2.4	26.8 25.8	26.3	8.4 8.5	8.4	4.1 3.7	3.9
16 March 2024	16:01	Cloudy	5	25.4 25.4	25.4	7.5 7.5	7.5	8.8 8.8	8.8	107.0 107.0	107.0	3.9 3.9	3.9	2.6 2.7	2.7
18 March 2024	15:56	Cloudy	8	26.7 26.7	26.7	7.2 7.2	7.2	6.6 6.6	6.6	82.9 82.9	82.9	3.0 3.1	3.0	2.3 2.9	2.6
20 March 2024	15:16	Sunny	6	26.5 26.5	26.5	7.2 7.2	7.2	7.2 7.2	7.2	89.5 89.0	89.3	3.7 3.9	3.8	3.6 3.9	3.8
22 March 2024	15:21	Sunny	7	26.4 26.4	26.4	7.3 7.3	7.3	7.7 7.7	7.7	95.3 95.3	95.3	3.9 3.8	3.9	1.0 1.0	1.0
25 March 2024	16:30	Sunny	8	26.4 26.4	26.4	7.1 7.2	7.1	6.3 6.4	6.4	78.8 79.6	79.2	2.6 2.6	2.6	1.7 1.8	1.8
27 March 2024	17:35	Fine	9	22.7 22.7	22.7	7.2 7.2	7.2	6.7 6.7	6.7	81.9 82.2	82.1	3.6 3.6	3.6	1.6 1.6	1.6
29 March 2024	16:33	Sunny	6	25.5 25.5	25.5	7.7 7.7	7.7	8.4 8.4	8.4	102.6 102.6	102.6	5.2 5.2	5.2	1.0 1.2	1.1

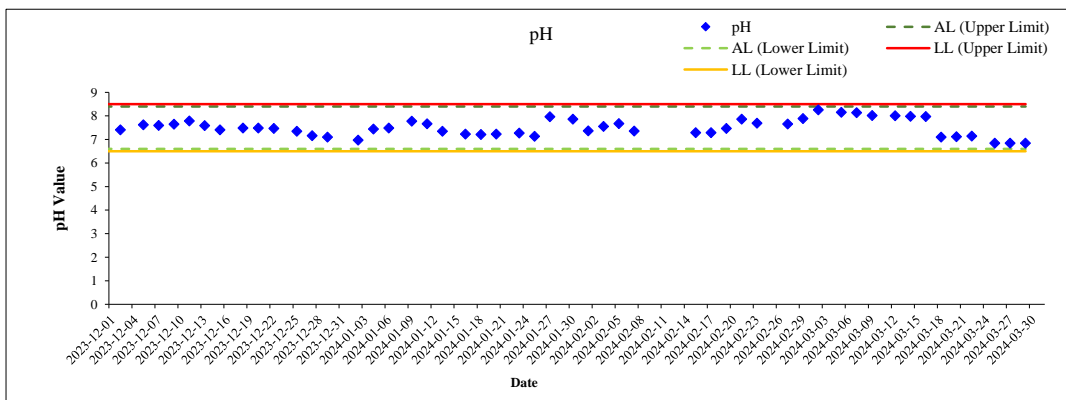
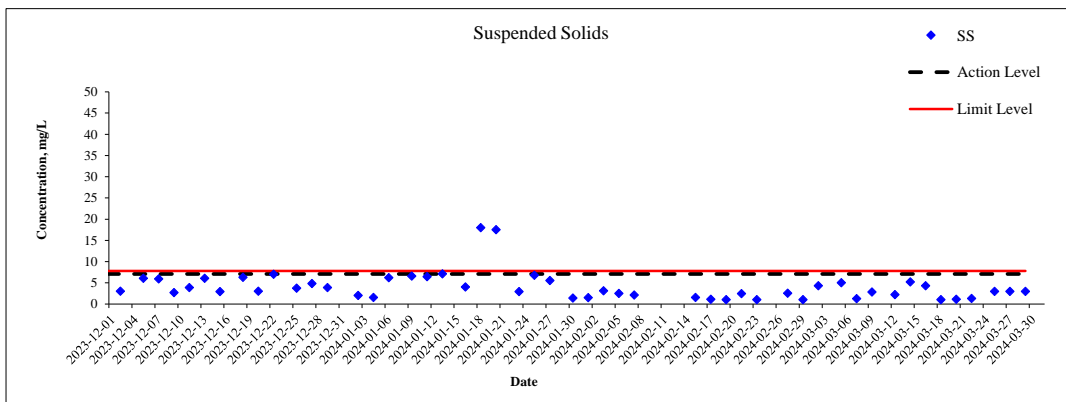
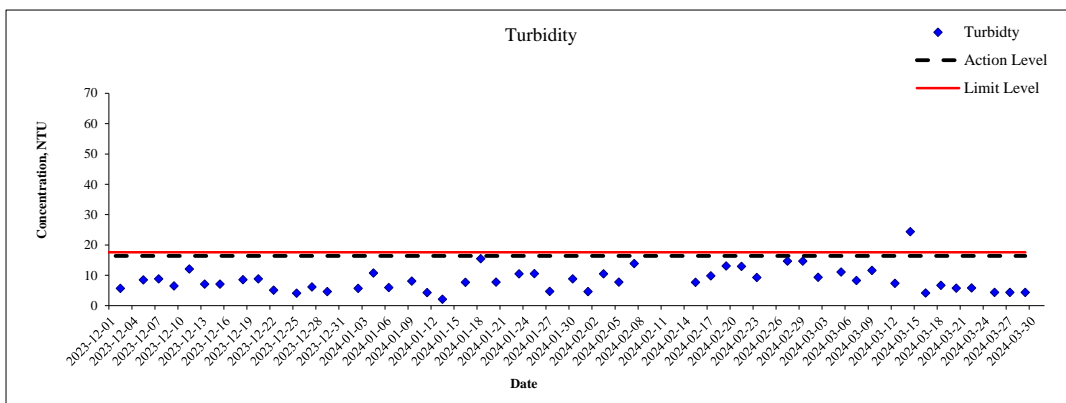
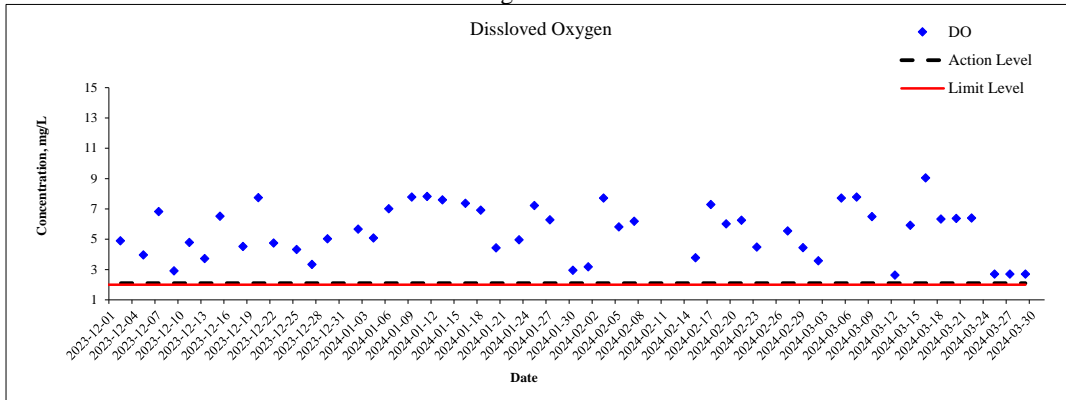
Water Quality Monitoring Location : U2

Date	Start Time	Weather	Water depth (cm)	Temperature (°C)		pH		DO (mg/L)		DO (%)		Turbidity (NTU)		Suspended Solids (mg/L)	
				Value	Average	Value	Average	Value	Average	Value	Average	Value	Average	Value	Average
02 March 2024	15:16	Cloudy	28	22.3 22.3	22.3	8.2 8.2	8.2	0.9 0.9	0.9	10.7 10.4	10.6	8.7 8.7	8.7	6.3 6.4	6.4
05 March 2024	16:21	Cloudy	27	21.0 21.0	21.0	8.2 8.2	8.2	7.9 7.9	7.9	88.2 88.2	88.2	3.0 3.0	3.0	2.2 2.0	2.1
07 March 2024	17:00	Cloudy	26	21.2 21.2	21.2	8.2 8.2	8.2	6.9 6.8	6.9	78.0 76.7	77.4	3.0 3.0	3.0	3.2 3.0	3.1
09 March 2024	16:33	Cloudy	29	22.1 22.1	22.1	8.0 8.0	8.0	6.2 6.2	6.2	71.5 71.5	71.5	2.4 2.4	2.4	3.6 3.8	3.7
12 March 2024	14:34	Sunny	30	20.7 20.7	20.7	8.1 8.0	8.0	3.1 3.1	3.1	34.9 34.4	34.7	4.2 4.2	4.2	5.1 4.6	4.9
14 March 2024	14:12	Fine	24	20.8 20.8	20.8	8.0 8.0	8.0	3.4 3.4	3.4	38.1 38.2	38.2	7.1 7.0	7.1	2.4 2.0	2.2
16 March 2024	15:30	Cloudy	27	25.8 25.8	25.8	7.5 7.4	7.4	7.6 7.6	7.6	94.4 93.7	94.1	6.1 6.0	6.0	8.3 8.6	8.5
18 March 2024	15:45	Cloudy	23	26.8 26.9	26.9	7.0 7.0	7.0	5.8 5.7	5.8	73.1 71.9	72.5	4.6 4.6	4.6	9.2 9.4	9.3
20 March 2024	15:59	Sunny	24	26.9 26.9	26.9	7.4 7.4	7.4	7.8 7.8	7.8	98.2 98.2	98.2	3.9 4.0	4.0	6.8 6.4	6.6
22 March 2024	14:49	Sunny	25	26.5 26.5	26.5	7.4 7.4	7.4	8.0 8.0	8.0	99.2 99.2	99.2	4.0 4.0	4.0	1.0 1.0	1.0
25 March 2024	16:18	Sunny	24	26.2 26.2	26.2	7.1 7.1	7.1	6.3 6.3	6.3	77.3 77.5	77.4	2.9 2.8	2.8	1.9 2.3	2.1
27 March 2024	17:24	Fine	30	22.6 22.6	22.6	7.1 7.1	7.1	6.8 6.8	6.8	83.7 83.2	83.5	3.3 3.3	3.3	2.3 2.6	2.5
29 March 2024	16:06	Sunny	27	25.5 25.5	25.5	7.7 7.7	7.7	8.4 8.4	8.4	102.2 102.2	102.2	5.7 5.7	5.7	1.1 1.2	1.2

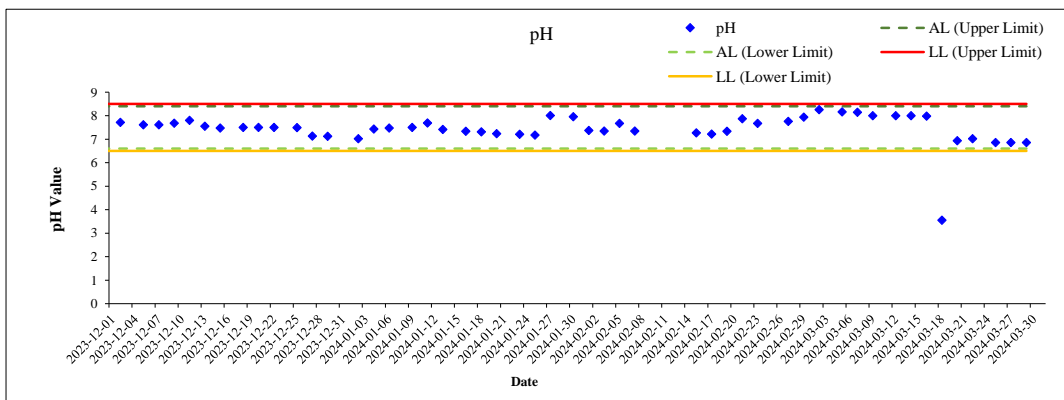
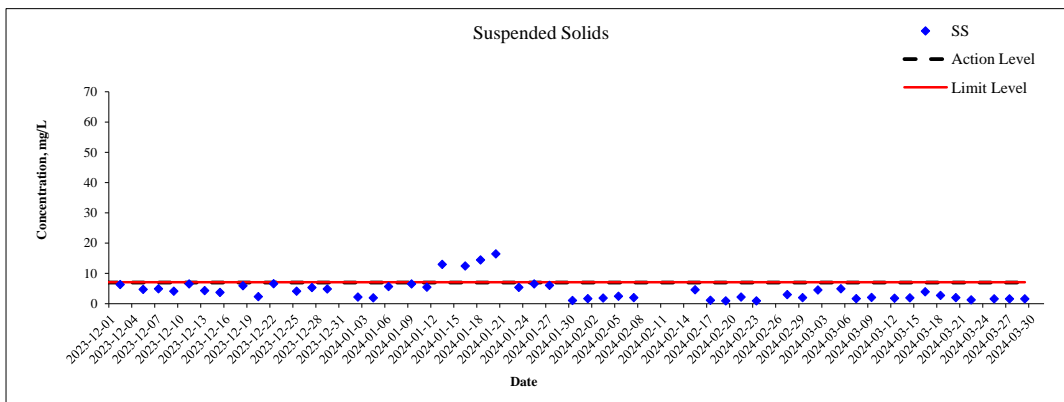
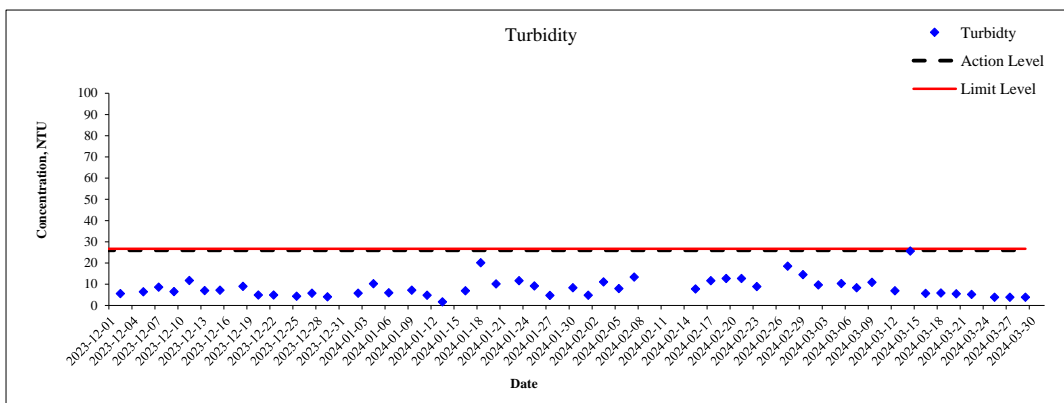
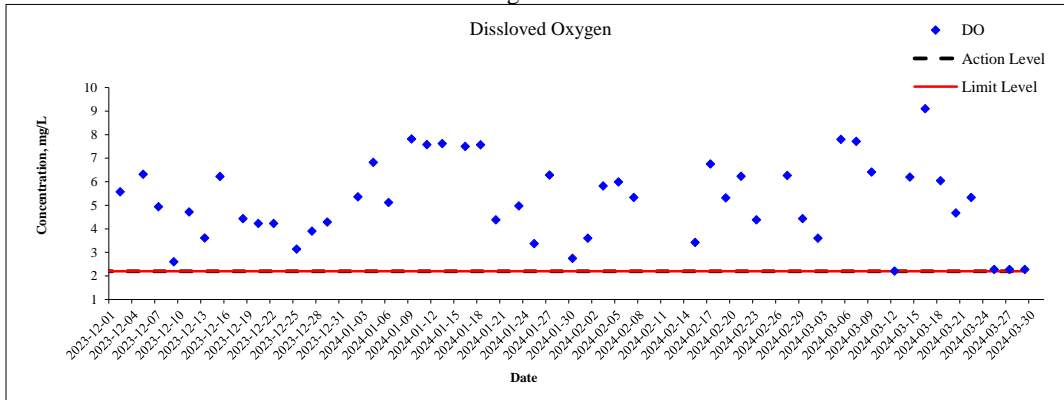
Water Quality Monitoring Location : HT

Date	Start Time	Weather	Water depth (cm)	Temperature (°C)		pH		DO (mg/L)		DO (%)		Turbidity (NTU)		Suspended Solids (mg/L)	
				Value	Average	Value	Average	Value	Average	Value	Average	Value	Average	Value	Average
02 March 2024	15:07	Cloudy	4	22.3 22.3	22.3	8.1 8.1	8.1	2.3 2.3	2.3	26.2 26.5	26.4	4.4 4.4	4.4	3.9 3.3	3.6
05 March 2024	16:56	Cloudy	3	21.0 21.0	21.0	8.2 8.2	8.2	7.8 7.8	7.8	87.4 87.4	87.4	5.8 5.8	5.8	4.7 4.5	4.6
07 March 2024	17:31	Cloudy	4	21.2 21.2	21.2	8.1 8.2	8.1	7.7 7.7	7.7	86.9 86.9	86.9	4.6 4.6	4.6	3.9 4.2	4.1
09 March 2024	16:42	Cloudy	4	22.1 22.1	22.1	7.9 7.9	7.9	6.0 6.0	6.0	69.0 68.9	69.0	3.9 3.8	3.9	2.8 2.5	2.7
12 March 2024	15:30	Sunny	6	20.7 20.7	20.7	8.0 8.0	8.0	1.6 1.6	1.6	17.9 18.1	18.0	4.8 4.9	4.9	1.7 2.0	1.9
14 March 2024	15:00	Fine	7	20.9 20.9	20.9	8.0 8.0	8.0	4.0 4.0	4.0	44.6 44.4	44.5	6.6 6.6	6.6	4.5 4.0	4.3
16 March 2024	16:16	Cloudy	4	25.3 25.3	25.3	7.6 7.7	7.6	9.0 9.0	9.0	109.3 109.3	109.3	4.0 3.9	4.0	1.0 1.0	1.0
18 March 2024	16:29	Cloudy	7	26.3 26.3	26.3	6.8 6.8	6.8	3.7 3.7	3.7	46.6 45.9	46.3	4.0 4.0	4.0	1.2 1.2	1.2
20 March 2024	15:48	Sunny	6	26.2 26.2	26.2	7.0 7.0	7.0	6.0 6.0	6.0	73.9 74.1	74.0	4.9 4.9	4.9	1.5 1.2	1.4
22 March 2024	15:45	Sunny	4	26.2 26.2	26.2	7.0 7.0	7.0	5.8 5.8	5.8	72.2 72.1	72.2	4.3 4.5	4.4	3.3 3.6	3.5
25 March 2024	17:12	Sunny	3	25.9 25.9	25.9	7.0 7.0	7.0	5.1 5.1	5.1	62.7 62.4	62.6	2.6 2.6	2.6	2.7 2.8	2.8
27 March 2024	17:56	Fine	7	22.5 22.5	22.5	7.0 7.0	7.0	5.5 5.5	5.5	67.0 66.9	67.0	3.8 3.8	3.8	4.5 4.4	4.5
29 March 2024	17:05	Sunny	6	25.3 25.3	25.3	7.7 7.7	7.7	8.2 8.2	8.2	100.1 100.0	100.1	5.3 5.3	5.3	1.2 1.5	1.4

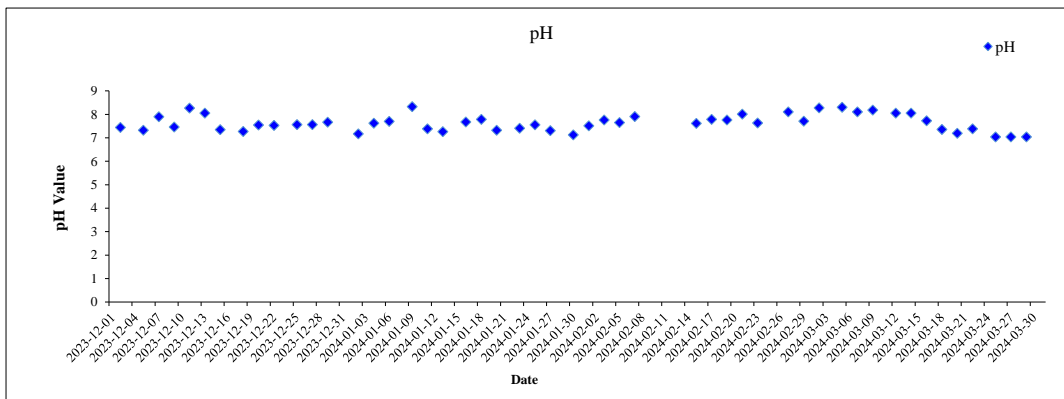
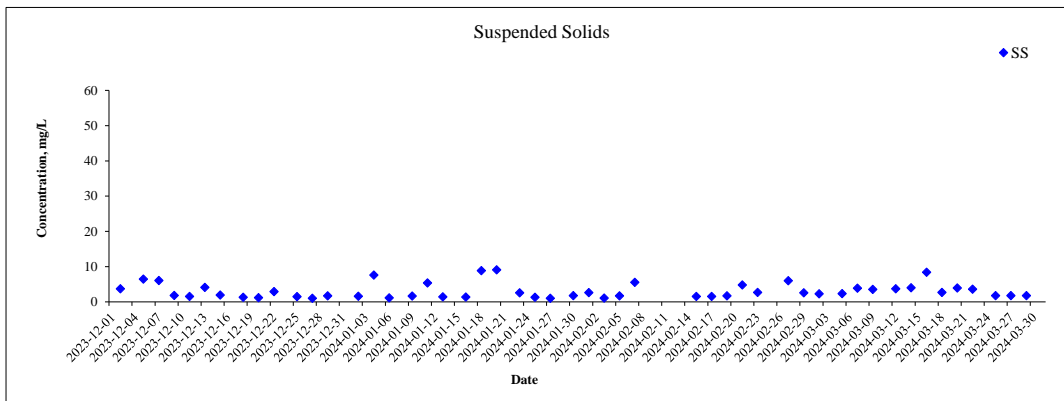
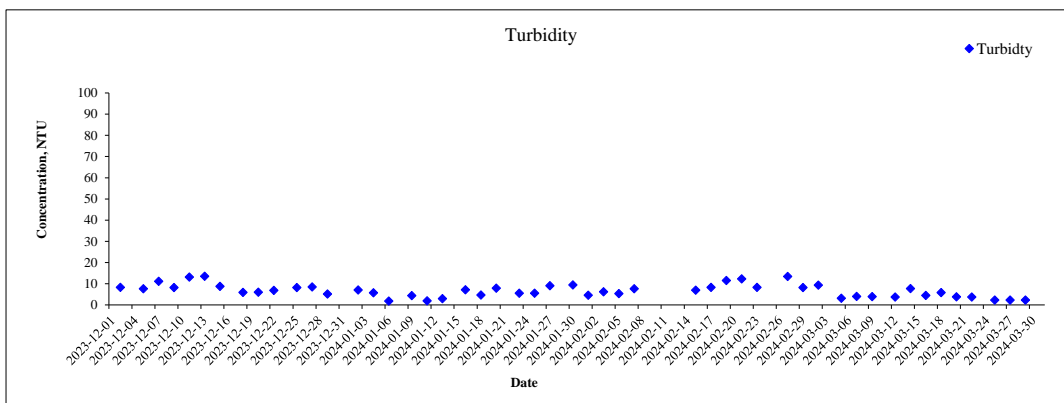
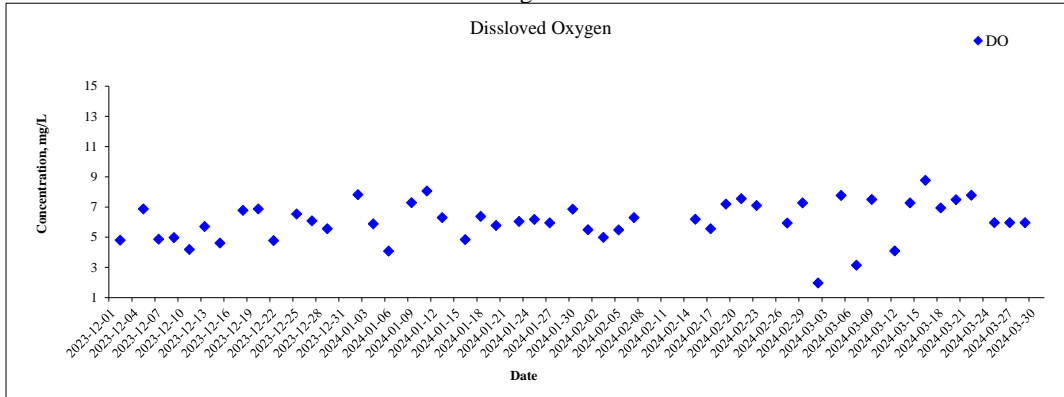
Monitoring Location: TKW1



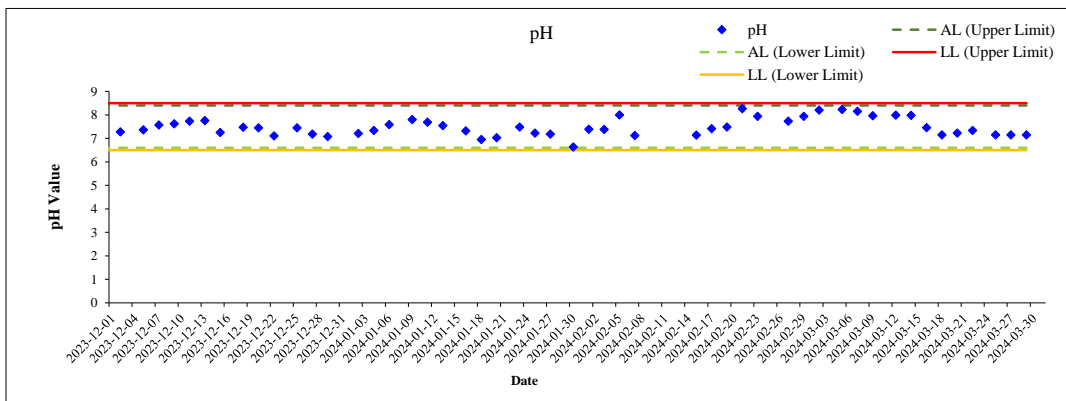
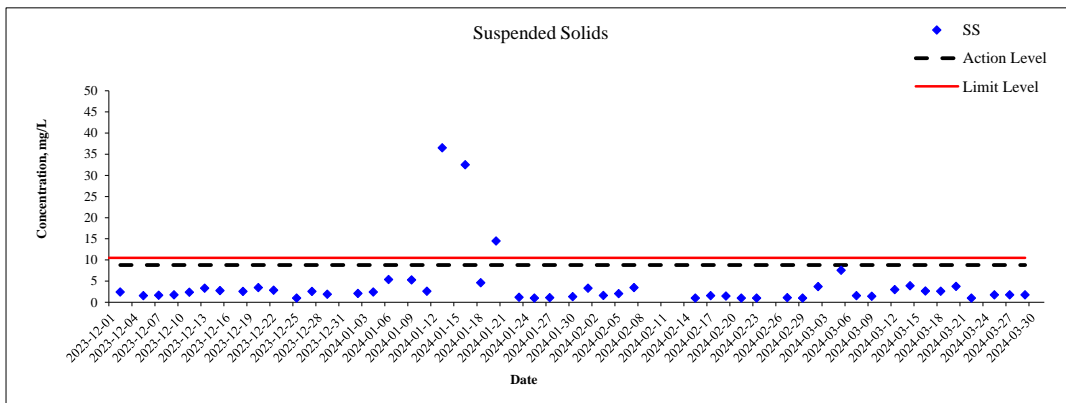
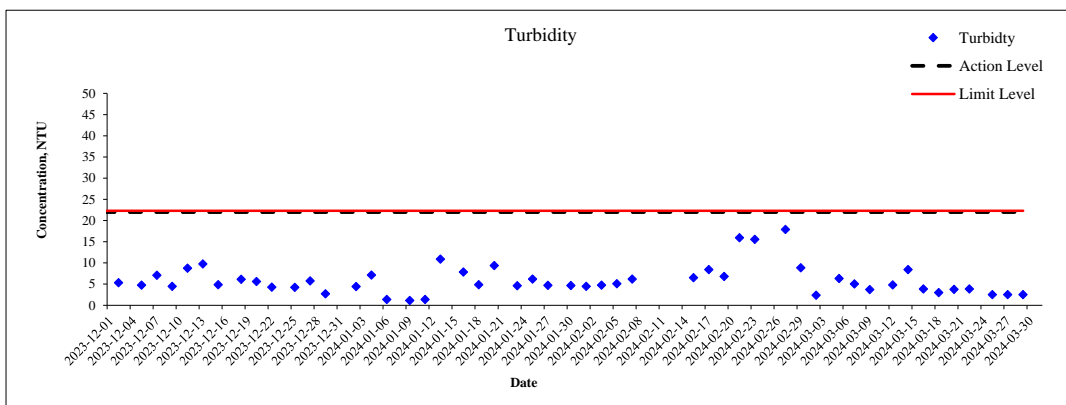
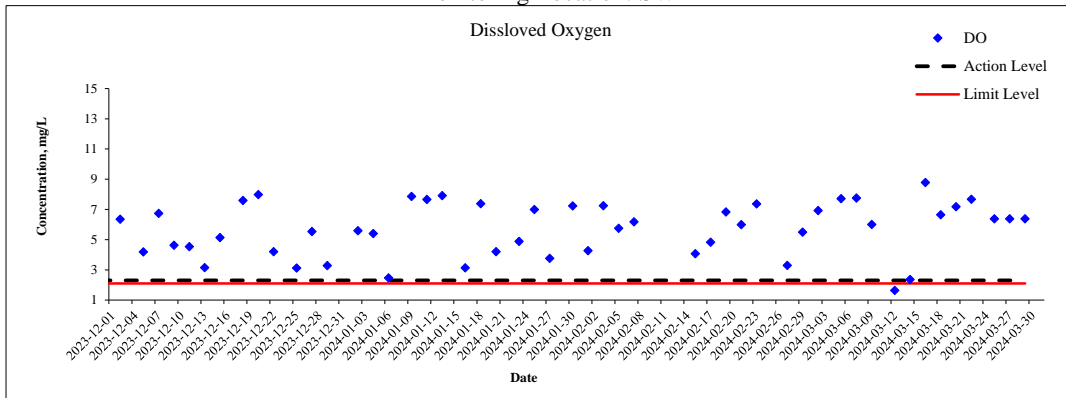
Monitoring Location: TKW



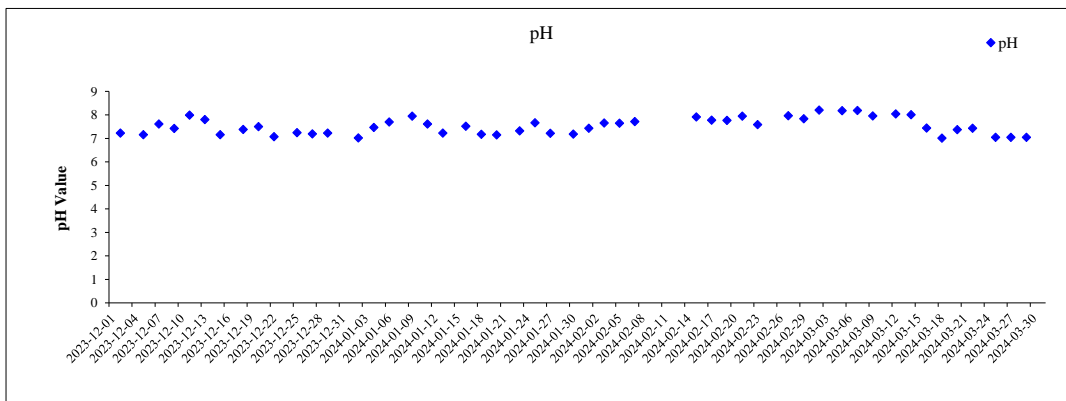
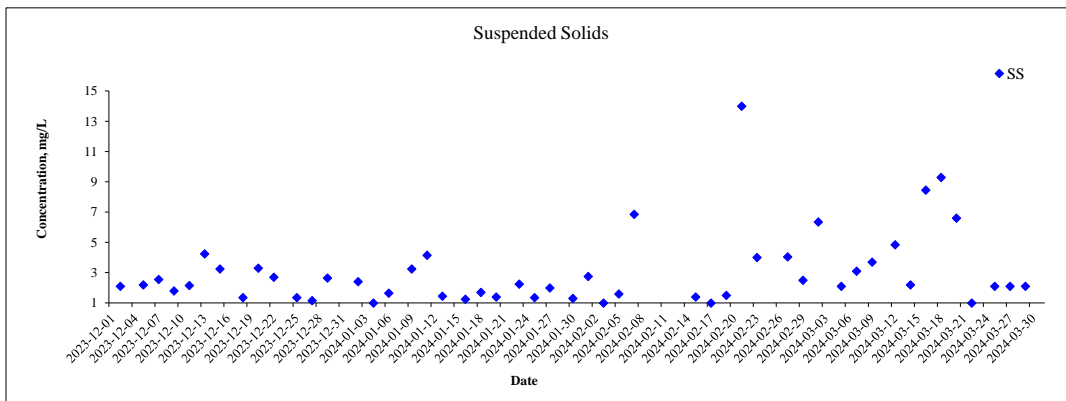
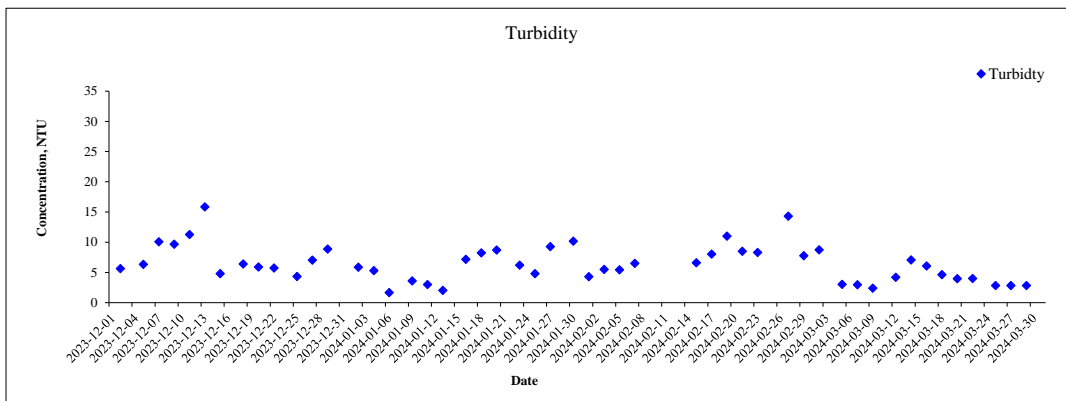
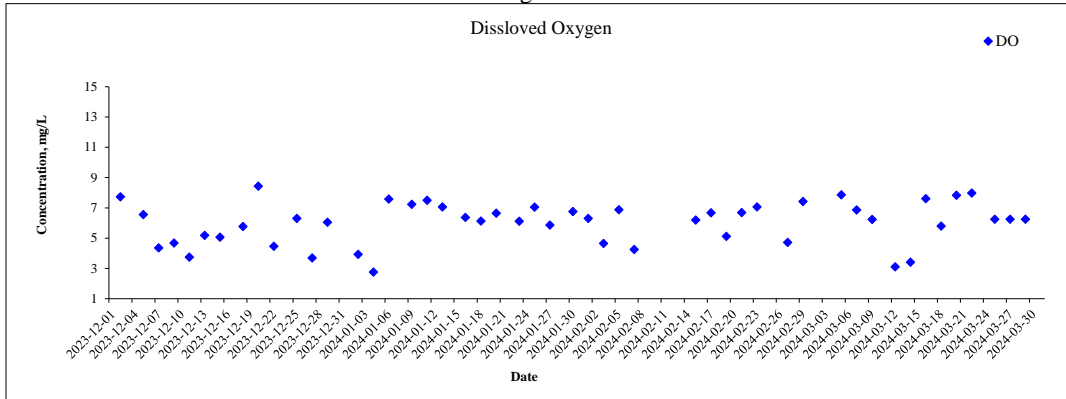
Monitoring Location: U1



Monitoring Location: SW



Monitoring Location: U2



Monitoring Location: HT

